

Spray Texture powder & ready mix



Description

Panel Rey® Spray Texture is a powder compound designed for application over most properly prepared interior surfaces. It is used to create a wide range of texture patterns using roller, brush, hopper-type gun or plastering spray pump machines.

Preparation

In cold weather (outside temperatures below 50°F), temperatures within the building should be maintained at a minimum 50°F, both day and night, before and during spray operations and until sprayed surfaces have fully dried. Adequate ventilation should be provided to eliminate excess moisture.

Surfaces, including joint-treated areas, must be smooth, clean and dry. First apply a coat of sealing primer. Allow primer to dry thoroughly, and maintain adequate drying conditions after application. Primer is required to minimize sagging of gypsum board and discoloration or difference in sheen on wall and ceiling surface.

Powder:

Slowly add one bag of dry powder texture (50 lb) to approximately 4 gal of clean water and mix to a heavy but lump-free consistency then apply. Continue mixing until has a smooth appearance. Consistency can be adjusted by removing or adding small amount of water.

Ready-mix:

Add spray texture ready-mix into the spraying container then apply. If a different consistency is required add clean water for the desire texture pattern.

Follow the instructions of the spray equipment manufacturer for adjusting controls and cleaning.

Advantages

- Easy mixing.
- Spreads easily.
- Non-aggregated texture
- Developed for different texture patterns.
- Prevents from common undesired texture effects like pinholes, craters and lumps.

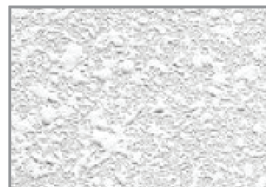
Common spray texture patterns



Spatter / Knockdown



Spatter



Acoustic



Orange Peel



Limitations

- PANEL REY® SPRAY TEXTURE is specified for indoors application only.
- PANEL REY® SPRAY TEXTURE is not considered a finished surface.
- Sealing primer is required before or after texturing to avoid difference in sheen on wall and ceiling surface.
- Do not overthin, as poor adhesion or texture variation may result.

Product Technical data

Powder:

Color: Off White.

Dilution: 4 gal of clean water per 50 lb bag.

Drying time (80°F / 50% RH): 60 – 90 min.

Coverage: 25 – 45 ft²/lb depending on texture pattern and dilution.

Shelf life: 6 months under normal humidity and temperature storage (50% RH, 64 - 77 °F)

Packaging: 50 lb. (bag)

Ready-mix:

Color: Off White.

Drying time (80°F / 50% RH): 60 – 90 min.

Coverage: 15 – 30 ft²/lb depending on texture pattern.

Shelf life: 9 months under normal humidity and temperature storage (50% RH, 64 - 77 °F)

Packaging: 3.75 gal / 14.1 L (Box)

Technical references

For additional information on the application of products please consult:

- ASTM C840: Standard Specification for Application and Finishing of Gypsum Board.
- GA-214: Gypsum Association publication “Levels of Gypsum Board Finish.”
- GA-216: Gypsum Association publication “Recommended Specifications for the Application and Finishing of Gypsum Board.”

Cautions

Dust or mist may cause irritation to eyes, skin, nose, throat and upper respiratory tract. Use of a respirator and eye protection is recommended during spray texture application. Use in a well-ventilated area or provide sufficient local ventilation to avoid breathing of dust and mist. If eye contact occurs, flush thoroughly with water for 15 minutes. If irritation persists, call physician. If ingested, call physician. Keep out reach of children.

All complaints must be in writing and supported with evidence; You must send in one period not exceeding 30 calendar days from the date in which it was discovered or should have discovered the defect and must be within the warranty period of the product. The customer should not alter or repair the affected area until Panel Rey have reviewed the problem and determine a possible cause. The Panel Rey S.A. liability is limited solely to the replacement of defective material and is not responsible for accidental and incidental, direct or indirect damages, or for any loss caused by the application of these products which don't go in accordance with the printed instructions or with the intended use.

Updates and Current Information: The public documentation named as technical data sheets (or TDS) are the mandatory documents. Advertising, prints, packages and/or catalogues could be previous versions with non updated information.

For more information contact us:

Customer Service USA

1 800 862 9022

Phone

+52 (81) 8345-0055

E-mail

contact.us@gpromax.com

Web Site

www.panelrey.com



TDS-TXS.V2024-1.0

This versions supersedes any previous version.