

Design/System/Construction/Assembly Usage Disclaimer

- Authorities Having Jurisdiction should be consulted in all cases as to the particular requirements covering the installation and use of UL Certified products, equipment, system, devices, and materials.
- Authorities Having Jurisdiction should be consulted before construction.
- Fire resistance assemblies and products are developed by the design submitter and have been investigated by UL for compliance with applicable requirements. The published information cannot always address every construction nuance encountered in the field.
- When field issues arise, it is recommended the first contact for assistance be the technical service staff provided by the product manufacturer noted for the design. Users of fire resistance assemblies are advised to consult the general Guide Information for each product category and each group of assemblies. The Guide Information includes specifics concerning alternate materials and alternate methods of construction.
- Only products which bear UL's Mark are considered Certified.

BXUV - Fire Resistance Ratings - ANSI/UL 263 Certified for United States
BXUV7 - Fire Resistance Ratings - CAN/ULC-S101 Certified for Canada

See General Information for Fire-resistance Ratings - ANSI/UL 263 Certified for United States
Design Criteria and Allowable Variances

See General Information for Fire Resistance Ratings - CAN/ULC-S101 Certified for Canada
Design Criteria and Allowable Variances

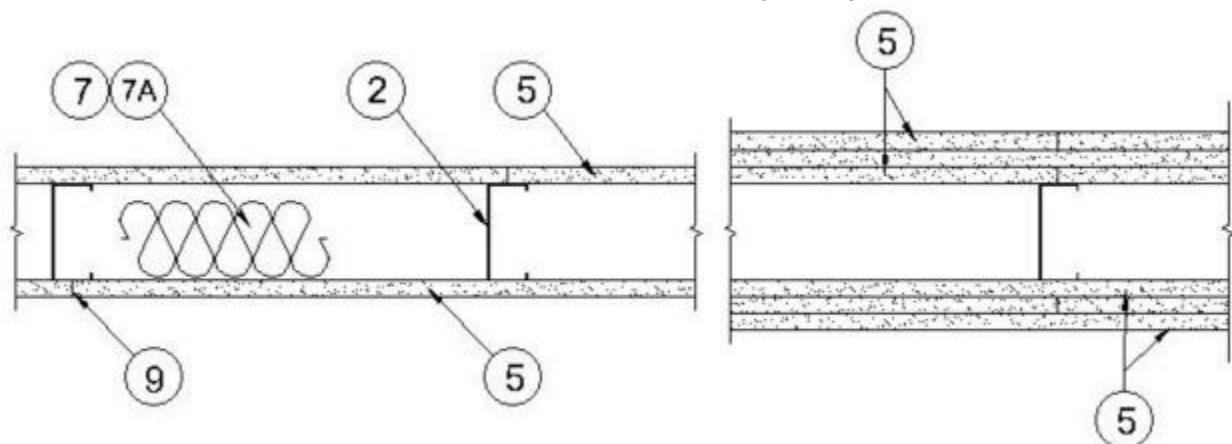
Design No. W496

August 2, 2023

Bearing Wall Ratings — 3/4 Hr, 1, 1-1/2 or 2 Hr (See Items 5 & 7)

This design was evaluated using a load design method other than the Limit States Design Method (e.g., Working Stress Design Method). For jurisdictions employing the Limit States Design Method, such as Canada, a load restriction factor shall be used — See Guide **BXUV or **BXUV7****

*** Indicates such products shall bear the UL or cUL Certification Mark for jurisdictions employing the UL or cUL Certification (such as Canada), respectively.**



Feedback

1. Floor and Ceiling Runners — (Not Shown) — Channel shaped, fabricated from min 0.0329 in., bare metal thickness (No. 20 MSG) corrosion-protected steel, that provide a sound structural connection between steel studs and adjacent assemblies such as floors, ceilings and/or other walls. Attached to floor and ceiling assemblies with steel fasteners spaced not greater than 24 in. OC.

1A. Floor and Ceiling Runners — (Not Shown, As an alternate to Item 1, For Use With Item 5A and 5C) — Channel shaped runners min 3-1/2 in. deep with 1-1/4 in. flanges fabricated from min No. 20 MSG corrosion-protected steel. Attached to floor and ceiling assemblies with steel fasteners spaced not greater than 24 in. OC.

1B. Floor and Ceiling Runners* — (Not shown, As an alternate to Items 1 and 1A, for use with Item 2D) – Channel shaped runners min 3-5/8 in. deep with 1-1/4 in. flanges fabricated from min No. 20 MSG (0.0329 in. bare metal thickness) corrosion protected galv steel. Attached to floor and ceiling assemblies with steel fasteners spaced not greater than 24 in. OC.

PANEL REY S A — SUPRA Track 20/33 mil

2. Steel Studs — Min 0.0329 in., bare metal thickness (No. 20 MSG) corrosion-protected steel studs, min 3-1/2 in. wide, cold formed, designed in accordance with the current edition of the Specification for the Design of Cold-Formed Steel Structural Members by the American Iron and Steel Institute (AISI). All design details enhancing the structural integrity of the wall assembly, including the axial design load of the studs, shall be as specified by the steel stud designer and/or producer, and shall meet the requirements of all applicable local code agencies. The max stud spacing shall not exceed 24 in. OC. Studs attached to floor and ceiling runners with 1/2 in. long Type S-12 steel screws on both sides of the studs or by welded or bolted connections designed in accordance with the AISI specifications.

2A. Steel Studs — (As an alternate to Item 2, For use with Item 5A, 5C, 5D, and 5E) — Channel shaped, fabricated from min 20 MSG corrosion-protected or galv steel, 3-1/2 in. min width, min 1-1/2 in. flanges and 1/4 in. return, spaced a max of 16 in. OC. Studs friction-fit into floor and ceiling runners.

2B. Steel Studs — (As an alternate to Item 2 and 2A, For Use With Item 5B) — Min 0.0329 in., (No. 20 MSG) corrosion-protected cold formed steel studs, min 3-1/2 in. deep by 1-5/8 in. wide with 1/2 in. returns. Braced at mid-height and designed in accordance with the current edition of the Specification for the Design of Cold-Formed Steel Structural Members by the American Iron and Steel Institute (AISI). All design details enhancing the structural integrity of the wall assembly, including the axial design load of the studs, shall be as specified by the steel stud designer and/or producer, and shall meet the requirements of all applicable local code agencies. The max stud spacing shall not exceed 24 in. OC. Studs attached to floor and ceiling runners with 1/2 in. long Type S-12 steel screws on both sides of the studs or by welded or bolted connections designed in accordance with the AISI specifications.

2C. Framing Members - Steel Studs — (As an alternate to Item 2, For use with Item 5C) — Channel shaped, fabricated from min 20 MSG (0.0327 in. thick) corrosion-protected or galv steel, 3-1/2 in. min width, min 1-1/2 in. flanges and 1/4 in. return, spaced a max of 16 in. OC. Studs friction-fit into floor and ceiling runners. Studs to be cut 5/8 to 3/4 in. less than assembly height.

2D. Framing Members* - Steel Studs — (As an alternate to item 2, for use with Item 1B) – For Bearing Wall – Corrosion protected steel studs, min No. 20 MSG (0.0329 in. min bare metal thickness) galv steel min 1-5/8 in. flanges, 3-5/8 in. deep, and 1/2 in. return designed in accordance with the Steel Framing Industry Association specifications. All design details enhancing the structural integrity of the wall assembly, including the axial design load of the studs, shall be as specified by the steel stud designer and/or producer, and shall meet the requirements of all applicable local code agencies. The max stud spacing of wall assemblies shall not exceed 24 in. OC. Studs attached to floor and ceiling tracks with 1/2 in. long Type S-12 steel screws on both sides of studs or by welded or bolted connections designed in accordance with the AISI specifications.

PANEL REY S A — SUPRA Stud 20/33 mil

3. Lateral Support Members — (Not shown) — Where required for lateral support of studs, support shall be provided by means of steel straps, channels or other similar means as specified in the design of a particular steel stud wall system.

4. Wood Structural Panel Sheathing — (Optional, For use with Item 5 only) — (Not Shown) — 4 ft wide, 7/16 in. thick oriented strand board (OSB) or 15/32 in. thick structural 1 sheathing (plywood) complying with DOC PS1 or PS2, or APA Standard PRP-108, manufactured with exterior glue, applied horizontally or vertically to the steel studs. Vertical joints centered on studs, and staggered one stud space from wallboard joints. Attached to studs with flat-head self-drilling tapping screws with a min. head diam. of 0.292 in. at maximum 6 in. OC. in the perimeter and 12 in. OC. in the field. When used, gypsum panels attached over OSB or plywood panels and fastener lengths for gypsum panels increased by min. 1/2 in.

The maximum loading on the steel studs was evaluated with the steel studs braced at mid-height and not braced by the plywood sheathing.

5. Gypsum Board* — Gypsum panels with beveled, square or tapered edges, applied vertically or horizontally. Vertical joints centered over studs and staggered one stud cavity on opposite sides of studs. Vertical joints in adjacent layers (multilayer

systems) staggered one stud cavity. Horizontal joints need not be backed by steel framing. Horizontal edge joints and horizontal butt joints on opposite sides of studs need not be staggered when load is reduced to 90 percent of max stud capacity. When load is at 100 percent, horizontal edge joints and horizontal butt joints on opposite sides of studs staggered a min of 12 in. Horizontal edge joints and horizontal butt joints on opposite sides of studs need not be staggered at 100 percent load with Type ULIX. Horizontal edge joints and horizontal butt joints in adjacent layers (multilayer systems) staggered a min of 12 in. Horizontal edge joints and horizontal butt joints in adjacent layers (multilayer systems) with Type ULIX need not be staggered. When used in widths other than 48 in., gypsum panels to be installed horizontally. The thickness and number of layers and percent of design load for the 45 min, 1 hr, 1-1/2 hr, and 2 hr ratings are as follows:

Wallboard Protection on Each Side of Wall

Rating	No. of Layers & Thkns of Panel	% of Design Load
45 Min	1 layer, 1/2 in. thick	100
1 hr	1 layer, 5/8 in. thick	100
1-1/2 hr	2 layers, 1/2 in. thick	100
2 hr	2 layers, 5/8 in. thick	80
2 hr@	2 layers, 5/8 in. thick	100
2 hr	3 layers, 1/2 in. thick	100
2 hr	2 layers, 3/4 in. thick	100

@Rating applicable when Batts and Blankets (Item 7) are used.

CGC INC — 1/2 in. thick Type IP-X2, IPC-AR, C, WRC, or; 5/8 in. thick Type SCX, SHX, WRX, IP-X1, AR, C, IP-AR, IP-X2, IPC-AR, ULIX, ULX, or WRC; 3/4 in. thick Types AR, IP-AR, IP-X3, ULTRACODE

UNITED STATES GYPSUM CO — 1/2 in. thick Type C, IP-X2, IPC-AR, or WRC; 5/8 in. thick Type AR, C, FRX-G, IP-AR, IP-X1, IP-X2, IPC-AR, SCX, SGX, SHX, ULIX, ULX, WRX, or WRC; 3/4 in. thick Types AR, IP-AR or IP-X3, ULTRACODE

USG BORAL DRYWALL SFZ LLC — 1/2 in. Type C; 5/8 in. Types C, SCX, SGX, ULTRACODE

USG MEXICO S A DE C V — 1/2 in. thick Type C, IP-X2, IPC-AR, WRC; 5/8 in. thick Type AR, C, IP-AR, IP-X1, IP-X2, IPC-AR, SCX, SHX, ULX, WRX or WRC; 3/4 in. thick Types AR, IP-AR, IP-X3, ULTRACODE

5A. **Gypsum Board*** — (As an alternate to Item 5 when used as the base layer on one or both sides of wall, For direct attachment only, not to be used with Item 4) — Nom 5/8 in. or 3/4 in. may be used as alternate to all 5/8 in. or 3/4 in. shown in Item 5, Wallboard Protection on Each Side of Wall table. Nom 5/8 in. or 3/4 in. thick lead backed gypsum panels with beveled, square or tapered edges, applied vertically. Vertical joints centered over 20 MSG steel studs and staggered min 1 stud cavity on opposite sides of studs. See Items 1A, 2A 8, 8A(a). Wallboard secured to studs with 1-1/4 in. long Type S-12 steel screws spaced 8 in. OC at perimeter and 12 in. OC in the field. To be used with Lead Batten Strips (see Item 12) or Lead Discs or Tabs (see Item 13).

RAY-BAR ENGINEERING CORP — Type RB-LBG

5B. **Gypsum Board*** — (As an alternate to Items 5 and 5A) — Nom 5/8 in. thick gypsum panels with square edges, applied horizontally or vertically. For the1 hour single layer system -when the gypsum board panels are installed horizontally the joints are to be staggered by a minimum of 12 in. on opposite sides of assembly, they are to be secured on each side of the studs with 1-1/4 in. long Type S-12 bugle head steel screws spaced 8 in. OC to the top and bottom tracks and in the field with screws 1 in. and 4 in. from the horizontal joints. When the gypsum board panels are installed vertically all vertical joints must be centered over studs and staggered min 1 stud cavity on opposite sides of studs. Gypsum board secured to studs with 1-1/4 in. long Type S-12 steel screws spaced 8 in. OC to the top and bottom tracks and in the field with screws 1 in and 4 in. from the perimeter. For the 2 hour double layer system - when the gypsum board panels are installed horizontally the joints need not be staggered on opposite sides of assembly. Base layer secured on each side of the studs with 1-1/4 in. long Type S-12 bugle head steel screws spaced 16 in. OC to the top and bottom track and in the field with screws beginning 1 in. and 8 in. from the horizontal joints. Face layer horizontal joints staggered 8 in from base layer joints and secured with 1-5/8 in. long Type S-12 bugle head steel screws spaced 16 in. OC to the top and bottom tracks and in the field with screws beginning 1 in. and 8 in. from the horizontal joints.

Face layer screws offset 8 in. from base layer screws. When the gypsum board panels are installed vertically all vertical joints must be centered over studs and staggered min 1 stud cavity on opposite sides of studs. Face layer gypsum boards secured to studs with 1-1/4 in. long Type S-12 steel screws spaced 16 in. OC with screws 2 in. and 16 in. from the perimeter. Base layer gypsum boards secured to studs with 1-1/4 in. long Type S-12 steel screws spaced 16 in. OC with screws 1-1/2 in and 8 in. from the perimeter. Face layer screws offset 8 in. from base layer screws.

CGC INC — Type USGX

UNITED STATES GYPSUM CO — 5/8 in. thick Type USGX (Joint tape and compound, Item 9, optional with Type USGX)

USG BORAL DRYWALL SFZ LLC — 5/8 in. thick Type USGX (Joint tape and compound, Item 9, optional with Type USGX)

USG MEXICO S A DE C V — Type USGX

5C. Gypsum Board* — (As an alternate to Item 5 when used as the base layer on one or both sides of wall, For direct attachment only, not to be used with Item 4) — Nominal 5/8 in. thick lead backed gypsum panels with beveled, square or tapered edges, applied vertically. Vertical joints centered over studs and staggered min 1 stud cavity on opposite sides of studs. Wallboard secured to studs with 1-1/4 in. long Type S-12 (or #6 by 1-1/4 in. long bugle head fine driller) steel screws spaced 8 in. OC at perimeter and 12 in. OC in the field.

NEW ENGLAND LEAD BURNING CO INC, DBA NELCO — Nelco

5D. Gypsum Board* — (As an alternate to Item 5 when used as the base layer on one or both sides of wall, For direct attachment only, not to be used with Item 4) — Nom 5/8 or 3/4 in. may be used as alternate to all 5/8 or 3/4 in. shown in Item 5, Wallboard Protection on Each Side of Wall table. Nom 5/8 or 3/4 in. thick lead backed gypsum panels with beveled, square or tapered edges, applied vertically. Vertical joints centered over 20 MSG steel studs and staggered min 1 stud cavity on opposite sides of studs. See Items 1A, 2A 8, 8A(a). Wallboard secured to studs with 1-1/4 in. long Type S-12 steel screws spaced 8 in. OC at perimeter and 12 in. OC in the field. To be used with Lead Batten Strips (see Item 12A) or Lead Discs (see Item 13A).

MAYCO INDUSTRIES INC — Type X-Ray Shielded Gypsum

5E. Gypsum Board* — (As an alternate to Item 5 when used as the base layer on one or both sides of wall, For direct attachment only, not to be used with Item 4) — Nom 5/8 in. may be used as alternate to all 5/8. shown in Item 5, Wallboard Protection on Each Side of Wall table. Nom 5/8 or 3/4 in. thick lead backed gypsum panels with beveled, square or tapered edges, applied vertically. Vertical joints centered over 20 MSG steel studs and staggered min 1 stud cavity on opposite sides of studs. See Items 1A, 2A 8, 8A(a). Wallboard secured to studs with 1-1/4 in. long Type S-12 steel screws spaced 8 in. OC at perimeter and 12 in. OC in the field.. Lead batten strips required behind vertical joints of lead backed gypsum wallboard and optional at remaining stud locations. Lead batten strips, min 2 in. wide, max 8 ft long with a max thickness of 0.14 in. placed on the face of studs and attached to the stud with construction adhesive and two 1 in. long Type S-12 pan head steel screws, one at the top of the strip and one at the bottom of the strip. Lead discs, nominal 3/8 in. diam by max 0.085 in. thick. Compression fitted or adhered over the screw heads. Lead batten strips and discs to have a purity of 99.9% meeting the Federal specification QQ-L-201f, Grade "C".

RADIATION PROTECTION PRODUCTS INC — Type RPP - Lead Lined Drywall

5F. Gypsum Board* — (As an alternate to Item 5 when Foam Plastic insulation (Item 17) is used) — Any 5/8 in. thick, 4 ft. wide, Gypsum Board listed in Item 5 above. Applied vertically with vertical joints centered over studs and staggered one stud cavity on opposite sides of studs. Gypsum panels secured to studs with 1 in. long Type S steel screws spaced 8 in. OC at perimeter and in the field. For 2 layer assemblies outer layer will be attached to studs over inner layer with the 1-5/8 in. long steel screws spaced 8 in. OC.

5G. Gypsum Board* — (As an alternate to Item 5 when Foam Plastic insulation (Item 18) is used) — Any 5/8 in. thick, 4 ft. wide, Gypsum Board listed in Item 5 above. Applied vertically with vertical joints centered over studs and staggered one stud cavity on opposite sides of studs. Gypsum panels secured to studs with 1-1/4 in. long Type S steel screws spaced 8 in. OC at perimeter and in the field. For 2 layer assemblies outer layer will be attached to studs over inner layer with the 1-7/8 in. long steel screws spaced 8 in. OC.

6. Fasteners — (Not Shown) — For use with Item 5 - Type S-12 steel screws used to attach panels to runners (Item 1 or 1A) and studs (Item 2 or 2A) or furring channels (Item 8). **Single layer systems:** 1 in. long for 1/2 and 5/8 in. thick panels or 1-1/4 in. long for 3/4 in. thick panels, spaced 8 in. OC when panels are applied horizontally, or 12 in. OC when panels are applied vertically. **Single layer system with Type ULIX:** 1 in. long, spaced 12 in. OC along the perimeter and in the field when panels are applied horizontally or vertically. **Two layer systems:** First layer- 1 in. long for 1/2 and 5/8 in. thick panels or 1-1/4 in. long for 3/4 in. thick panels, spaced 16 in. OC. Second layer- 1-5/8 in. long for 1/2 in. and 5/8 in. thick panels or 2-1/4 in. long for 3/4 in. thick panels, spaced 16 in. OC with screws offset 8 in. from first layer. **Three-layer systems:** First layer- 1 in. long for 1/2 in. thick panels,

spaced 24 in. OC. Second layer- 1-5/8 in. long for 1/2 in. thick panels, spaced 24 in. OC. Third layer- 2-1/4 in. long for 1/2 in. thick panels, spaced 12 in. OC. Screws offset min 6 in. from layer below.

7. Batts and Blankets* — (Required as indicated under Item 5) — Nom 2 in. thick mineral wool batts, friction fitted between studs and runners. See **Batts and Blankets (BKNV or BZJZ) Categories** for names of Classified companies.

7A. Batts and Blankets* — (Optional, Not Shown) — Placed in stud cavities, any glass fiber or mineral wool insulation bearing the UL Classification Marking as to Surface Burning Characteristics and/or Fire Resistance. See **Batts and Blankets (BKNV or BZJZ) Categories** for names of Classified companies.

7B. Batts and Blankets* — (Optional, Not Shown) — Placed in stud cavities, glass fiber insulation bearing the UL Classification Marking as to Surface Burning Characteristics and/or Fire Resistance.

OWENS CORNING — Type QuietZone Acoustic Batts

7C. Fiber, Sprayed* — (Optional) — As an alternate to Batts and Blankets (Item 7) — Not for use with Items 8A or 8B) — Spray applied mineral wool insulation. The fiber is applied with adhesive, at a minimum density of 4.0 pcf, to completely fill the enclosed cavity in accordance with the application instructions supplied with the product. See Fiber, Sprayed (CCAZ).

AMERICAN ROCKWOOL MANUFACTURING, LLC — Type Rockwool Premium Plus

8. Furring Channels — (Optional on one or both sides, not shown, for single or double layer systems) — Resilient furring channels fabricated from min 25 MSG corrosion-protected steel, spaced vertically a max of 24 in. OC. Flange portion attached to each intersecting stud with 1/2 in. long Type S-12 panhead steel screws. Not for use with type FRX-G gypsum panels and Item 5A, 5C, 5D, or 5E.

8A. Steel Framing Members (Not Shown)* — (Optional on one or both sides, not shown, for single or double layer systems) — As an alternate to Item 8, furring channels and Steel Framing Members as described below:

a. **Furring Channels** — Formed of No. 25 MSG galv steel. 2-9/16 in. or 2-23/32 in. wide by 7/8 in. deep, spaced max. 24 in. OC perpendicular to studs. Channels secured to studs as described in Item b. Gypsum board attached to furring channels as described in Item 6. Not for use with type FRX-G gypsum panels and Item 5A, 5C, 5D, or 5E.

b. **Steel Framing Members*** — Used to attach furring channels (Item 8a) to studs (Item 2). Clips spaced max. 48 in. OC., and secured to studs with No. 8 x 1-1/2 in. minimum self-drilling, S-12 steel screw through the center grommet. Furring channels are friction fitted into clips. RSIC-1 clip for use with 2-9/16 in. wide furring channels. RSIC-1 (2.75) clip for use with 2-23/32 in. wide furring channels.

PAC INTERNATIONAL L L C — Types RSIC-1, RSIC-1 (2.75).

8B. Steel Framing Members* — (Not Shown) — (Optional on one or both sides, not shown, for single or double layer systems) — As an alternate to Item 8, furring channels and Steel Framing Members as described below:

a. **Furring Channels** — Formed of No. 25 MSG galv steel. 2-3/8 in. wide by 7/8 in. deep, spaced max. 24 in. OC perpendicular to studs. Channels secured to studs as described in Item b. Gypsum board attached to furring channels as described in Item 6. Not for use with type FRX-G gypsum panels and Item 5A, 5C, 5D, or 5E.

b. **Steel Framing Members*** — Used to attach furring channels to studs (Item 2). Clips spaced max. 48 in. OC., and secured to studs with No. 8 x 1-1/2 in. minimum self-drilling, S-12 steel screw through the center grommet. Furring channels are friction fitted into clips.

PLITEQ INC — Type GENIECLIP

8C. Steel Framing Members* — (Not Shown) — (Optional on one or both sides, not shown, for single or double layer systems) — As an alternate to Item 8, furring channels and Steel Framing Members as described below:

a. **Furring Channels** — Formed of No. 25 MSG galv steel, spaced max. 24 in. OC perpendicular to studs. Channels secured to studs as described in Item b. Ends of adjoining channels overlapped 6 in. and tied together with double strand of No. 18 AWG galvanized steel wire. Gypsum board attached to furring channels as described in Item 6. Not for use with type FRX-G gypsum panels and Item 5A, 5C, 5D, or 5E.

b. **Steel Framing Members*** — Used to attach furring channels to studs (Item 2). Clips spaced max. 48 in. OC., and secured to studs with 2 in. coarse drywall screw with 1 in. diam washer through the center hole. Furring channels are friction fitted into clips.

STUDCO BUILDING SYSTEMS — RESILMOUNT Sound Isolation Clips - Type A237R

8D. Steel Framing Members* — (Not Shown) — (Optional on one or both sides, not shown, for single or double layer systems) — As an alternate to Item 8, furring channels and Steel Framing Members as described below:

a. **Furring Channels** — Formed of No. 25 MSG galv steel, spaced max. 24 in. OC perpendicular to studs. Channels secured to studs as described in Item 8Db. Ends of adjoining channels overlapped 6 in. and tied together with double strand of No. 18 AWG galvanized steel wire. Gypsum board attached to furring channels as described in Item 6. Not for use with type FRX-G gypsum panels and Item 5A, 5C, 5D, or 5E.

b. **Steel Framing Members*** — Used to attach furring channels to studs (Item 2). Clips spaced max. 48 in. OC, and secured to studs with No. 8 x 2-1/2 in. coarse drywall screw through the center hole. Furring channels are friction fitted into clips.

REGUPOL AMERICA — Type SonusClip

8E. Steel Framing Members* — (Not Shown) — (Optional on one or both sides, not shown, for single or double layer systems) — As an alternate to Item 8, resilient channels and Steel Framing Members as described below:

a. **Resilient Channels** — Formed of No. 25 MSG galv steel, spaced 24 in. OC, and perpendicular to studs. Channels secured to studs as described in Item b. Ends of adjoining channels overlapped 6 in. and secured in place with two No. 8 15 x 1/2 in. Philips Modified Truss screws spaced 2-1/2 in. from the center of the overlap. Gypsum board attached to resilient channels as described in Item 5. Not for use with type FRX-G gypsum panels and Item 5A, 5C, 5D, or 5E.

b. **Steel Framing Members*** — Used to attach resilient channels (Item 8Ea) to studs. Clips spaced 48 in. OC, and secured to studs with No. 8 x 2-1/2 in. coarse drywall screw through the center hole. Resilient channels are secured to clips with one No. 10 x 1/2 in. pan-head self-drilling screw.

KEENE BUILDING PRODUCTS CO INC — Type RC+ Assurance Clip

8F Steel Framing Members* — (Optional on one or both sides, not shown, for single or double layer systems) — As an alternate to Item 8, furring channels and Steel Framing Members as described below:

a. **Furring Channels** — Formed of No. 25 MSG galv steel. 2-23/32 in. wide by 7/8 in. deep, spaced 24 in. OC perpendicular to studs. Channels secured to studs as described in Item b. Ends of adjoining channels are overlapped 6 in. and tied together with double strand of No. 18 SWG galv steel wire near each end of overlap. As an alternate, ends of adjoining channels may be overlapped 6 in. and secured together with two self-tapping #6 framing screws, min. 7/16 in. long at the midpoint of the overlap, with one screw on each flange of the channel. Gypsum board attached to furring channels as described in Item 5.

b. **Steel Framing Members*** — Used to attach furring channels (Item 8Fa) to studs. Clips spaced maximum 48 in. OC. Clips secured to studs with No. 8 x 2-1/2 in. coarse drywall screw through the center grommet. Furring channels are friction fitted into clips.

CLARKDIETRICH BUILDING SYSTEMS — Type ClarkDietrich Sound Clip

9. Joint Tape and Compound — Vinyl or casein, dry or premixed joint compound applied in two coats to joints and screw heads of outer layers. Paper tape, nom 2 in. wide, embedded in first layer of compound over all joints of outer layers. Paper tape and joint compound may be omitted when gypsum boards are supplied with square edges.

10. Siding, Brick or Stucco — (Optional, Not Shown) — Aluminum, vinyl or steel siding, brick veneer or stucco, meeting the requirements of local code agencies. Brick veneer attached to studs with corrugated metal wall ties attached to each stud with steel screws, not more than each sixth course of brick.

11. Caulking and Sealants* — (Optional, Not Shown) — A bead of acoustical sealant applied around the partition perimeter for sound control.

UNITED STATES GYPSUM CO — Type AS

12. Lead Batten Strips — (Not Shown, For Use With Item 5A) — Lead batten strips, min 1-1/2 in. wide, max 10 ft long with a max thickness of 0.125 in. Strips placed on the interior face of studs and attached from the exterior face of the stud with two 1 in. long Type S-12 pan head steel screws, one at the top of the strip and one at the bottom of the strip. Lead batten strips to have a purity of 99.9% meeting the Federal specification QQ-L-201f, Grade "C". Lead batten strips required behind vertical joints of lead backed gypsum wallboard (Item 5A) and optional at remaining stud locations. Required behind vertical joints.

12A. Lead Batten Strips — (Not Shown, for use with Item 5D) — Lead batten strips, 2 in. wide, max 10 ft long with a max thickness of 0.140 in. Strips placed on the face of studs and attached to the stud with two min. 1 in. long min. Type S-8 pan head steel screws, one at the top of the strip and one at the bottom of the strip or with one min. 1 in. long min. Type S-8 pan head steel screw at the top of the strip. Lead batten strips to have a purity of 99.5% meeting the Federal specification QQ-L-201f,

Grades "B, C or D". Lead batten strips required behind vertical joints of lead backed gypsum wallboard (Item 6) and optional at remaining stud locations.

13. Lead Discs or Tabs — (Not Shown, For Use With Item 5A) — Used in lieu of or in addition to the lead batten strips (Item 12) or optional at other locations - Max 3/4 in. diam by max 0.125 in. thick lead discs compression fitted or adhered over steel screw heads or max 1/2 in. by 1-1/4 in. by max 0.125 in. thick lead tabs placed on gypsum boards (Item 5A) underneath screw locations prior to the installation of the screws. Lead discs or tabs to have a purity of 99.9% meeting the Federal specification QQ-L-201f, Grade "C".

13A. Lead Discs — (Not Shown, for use with Item 5D) — Max 5/16 in. diam by max 0.140 in. thick lead discs compression fitted or adhered over steel screw heads. Lead discs to have a purity of 99.5% meeting the Federal Specification QQ-L-201f, Grades "B, C or D".

14. Lead Batten Strips — (Not Shown, For Use With Item 5C) — Lead batten strips, 2 in. wide, max 10 ft long with a max thickness of 0.142 in. Strips placed on the face of studs and attached to the stud with two min. 1 in. long min. Type S-8 pan head steel screws, one at the top of the strip and one at the bottom of the strip or with one min. 1 in. long min. Type S-8 pan head steel screw at the top of the strip. Lead batten strips to have a purity of 99.9% meeting the Federal specification QQ-L-201f, Grade "C". Lead batten strips required behind vertical joints of lead backed gypsum wallboard (Item 5C) and optional at remaining stud locations.

15. Lead Tabs — (Not Shown, For Use With Item 5C) — 2 in. wide, 5 in. long with a max thickness of 0.142 in. Tabs friction-fit around front face of stud, the stud folded back flange, and the back face of the stud. Tabs required at each location where a screw (that secures the gypsum boards, Item 5C) will penetrate the steel stud. Lead tabs to have a purity of 99.9% meeting the Federal specification QQ-L-201f, Grade "C". Lead tabs may be held in place with standard adhesive tape if necessary.

16. Wall and Partition Facings and Accessories* — (CLBV) (Optional, Not Shown) — For use with Item 1, Item 2 to 2C, Item 3, Item 5, Item 6, Item 7A, Item 8 and Item 9. For a maximum fire rating of 1 hour. On one side of the wall, over the first layer of Gypsum Board (Item 5), install RefleXor membrane with the gold side facing outwards. Membrane installed with T50 staples spaced 12 inches on center in both directions as per manufacturer's instructions, seams in membrane to be overlapped by 2 inches. When RefleXor membrane is used an additional layer of Gypsum Board identical to the one used in the first layer and as specified in Item 5 shall be installed over the membrane. Additional layer of Gypsum Board to be installed through the membrane to the stud as specified in Item 5 except the fastener length shall be increased by a minimum of 5/8 inch. Install Batts and Blankets in the stud cavity as per Item 7A.

On the other side of the wall prior to the installation of the Gypsum Board install Resilient Channels as per Item 8. Over the Resilient Channels install 3/4 inch thick SONOpan panel secured to the Resilient Channels with min. 1-1/4 in. long drywall screws and washers spaced at 16 in. OC on the perimeter of the panel and 8 in. OC in the field of the panel. Over the SONOpan panel install the same Gypsum Board as specified in Item 5 with the fastener length increased by minimum 3/4 inch. Not evaluated or intended as a substitute for the required layer(s) of UL Classified Gypsum Board.

Alternately, on the other side of the wall prior to the installation of the Gypsum Board (Item 5), install 3/4 in. thick SONOpan panels, secured to one side of studs either horizontally or vertically. Panels secured to each stud with min. 1-1/4 in. long drywall screws spaced 12 in. OC. Over the SONOpan, install 25 MSG galv steel, Resilient Channels, spaced vertically 24 in. OC. Resilient Channels fastened through panels to each stud with min. 2 in. long drywall screws or self-tapping screws. Over the Resilient Channels install Gypsum Board as specified in Item 5 with drywall screws as specified in Item 6. Panels not evaluated or intended as a substitute for the required layer(s) of UL Classified Gypsum Board.

MSL — RefleXor membrane, SONOpan panel.

17. Foamed Plastic* – (Optional, Not Shown) Spray applied, foamed plastic insulation, at any thickness from partial fill to completely filling stud cavity.

CARLISLE SPRAY FOAM INSULATION – Types SealTite ONE, SealTite Pro Closed Cell (CC), SealTite Pro Open Cell (OC), SealTite Pro OCX, SealTite Pro No Trim 21, SealTite Pro One Zero, Foamsulate Closed Cell, Foamsulate OCX, Foamsulate 70, and Foamsulate HFO

18. Foamed Plastic*– (Optional, Not Shown for use with item 5G) Spray applied, foamed plastic insulation, at any thickness from partial fill to completely filling stud cavity.

BASF CORP - Enertite® NM, Enertite® G, FE178®, Spraytite® 178, Spraytite® 81206, Walltite® 200, Walltite® US and Walltite® US-N, and Walltite HP+

*** Indicates such products shall bear the UL or cUL Certification Mark for jurisdictions employing the UL or cUL Certification (such as Canada), respectively.**

Last Updated on 2023-08-02

The appearance of a company's name or product in this database does not in itself assure that products so identified have been manufactured under UL Solutions' Follow - Up Service. Only those products bearing the UL Mark should be considered to be Certified and covered under UL Solutions' Follow - Up Service. Always look for the Mark on the product.

UL Solutions permits the reproduction of the material contained in Product iQ subject to the following conditions: 1. The Guide Information, Assemblies, Constructions, Designs, Systems, and/or Certifications (files) must be presented in their entirety and in a non-misleading manner, without any manipulation of the data (or drawings). 2. The statement "Reprinted from Product iQ with permission from UL Solutions" must appear adjacent to the extracted material. In addition, the reprinted material must include a copyright notice in the following format: "©2023 UL LLC."