

BXUV.U040 - Fire-resistance Ratings - ANSI/UL 263



Design/System/Construction/Assembly Usage Disclaimer

- Authorities Having Jurisdiction should be consulted in all cases as to the particular requirements covering the installation and use of UL Certified products, equipment, system, devices, and materials.
- Authorities Having Jurisdiction should be consulted before construction.
- Fire resistance assemblies and products are developed by the design submitter and have been investigated by UL for compliance with applicable requirements. The published information cannot always address every construction nuance encountered in the field.
- When field issues arise, it is recommended the first contact for assistance be the technical service staff provided by the product manufacturer noted for the design. Users of fire resistance assemblies are advised to consult the general Guide Information for each product category and each group of assemblies. The Guide Information includes specifics concerning alternate materials and alternate methods of construction.
- Only products which bear UL's Mark are considered Certified.

BXUV - Fire Resistance Ratings - ANSI/UL 263 Certified for United States

BXUV7 - Fire Resistance Ratings - CAN/ULC-S101 Certified for Canada

[See General Information for Fire-resistance Ratings - ANSI/UL 263 Certified for United States Design Criteria and Allowable Variances](#)

[See General Information for Fire Resistance Ratings - CAN/ULC-S101 Certified for Canada Design Criteria and Allowable Variances](#)

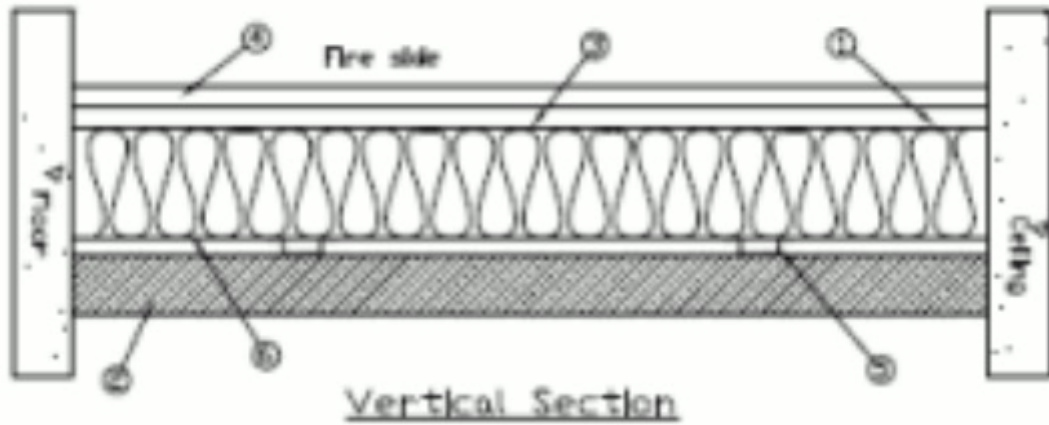
Design No. U040

March 11, 2020

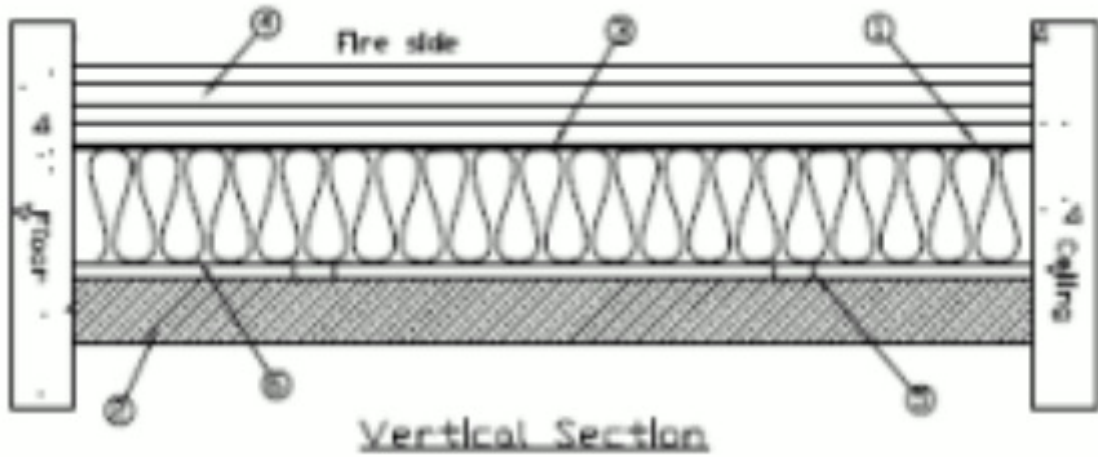
Nonbearing Wall Rating — 1, 2 or 3 Hr (See Item 4)

*** Indicates such products shall bear the UL or cUL Certification Mark for jurisdictions employing the UL or cUL Certification (such as Canada), respectively.**

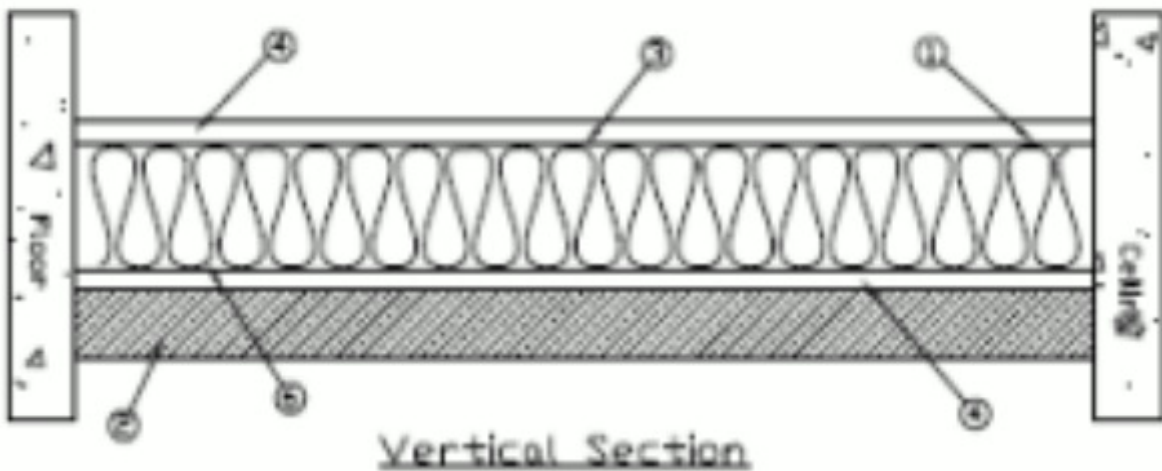
1 HOUR RATING

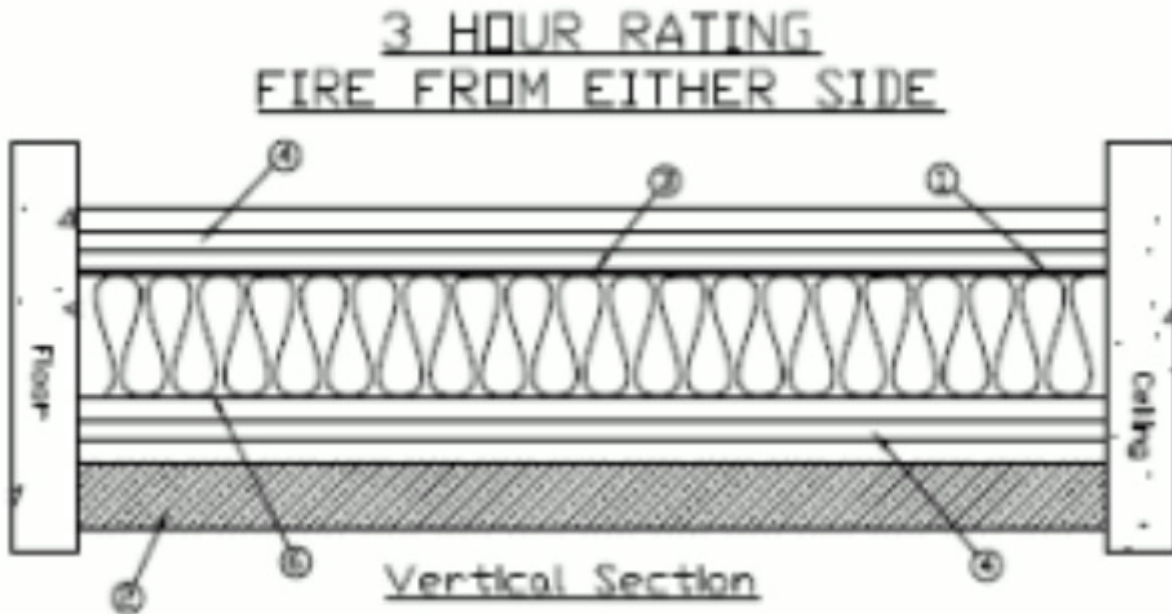
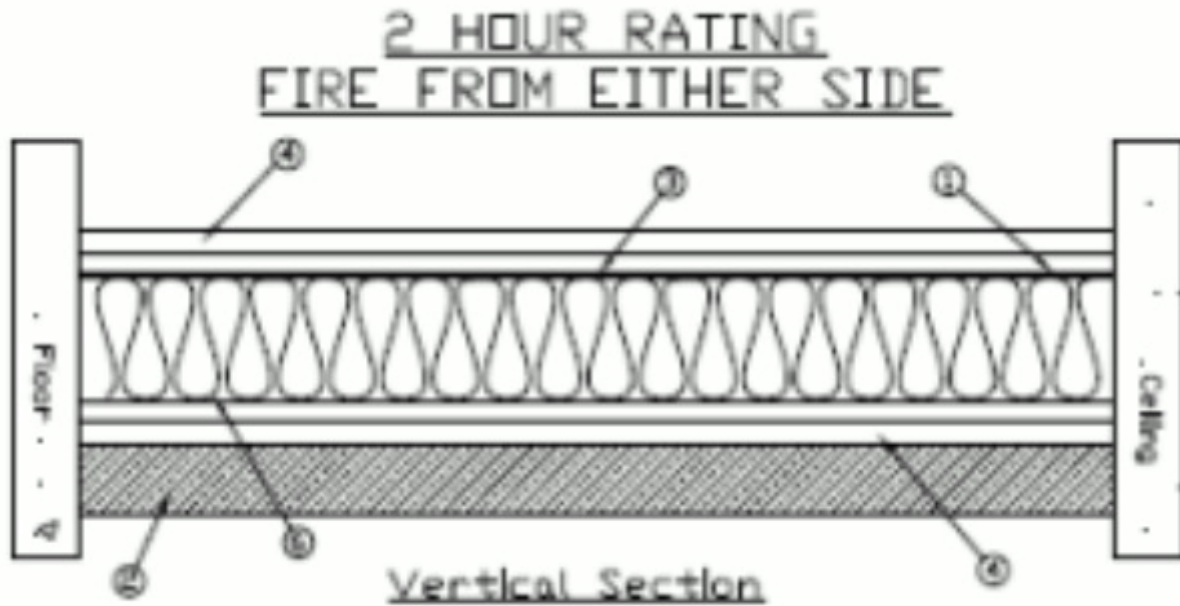


2 HOUR RATING



1 HOUR RATING FIRE FROM EITHER SIDE





1. Floor and Ceiling Runners — Channel-shaped runners, 3-5/8 in. wide min., fabricated from No. 25 MSG galv steel. Attached to floor and ceiling with fasteners spaced 24 in. OC, max.

2. Building Units* — Insulated steel panels 24, 30 or 42 in. wide. Attached through retainer clips to studs or support steel with No. 14 hex head self-tapping screws located at each joint in the concealed lip of the units and spaced in accordance with the structural design requirements.

CENTRIA, A DIVISION OF NCI GROUP, INC — Types Formawall Dimension Series, Formawall Dimension Series Graphix, Versapanel 1.75", 2.5", 4"; Versawall 2", 2.75", 4"; MetalWrap Long Span 2", 2.75" & 4" and MetalWrap.

3. Steel Studs — Channel shaped, 3-5/8 in. wide min, 1-1/4 in. legs, 3/8 in. folded back returns, min 0.020 in. thick (25 gauge) galv steel spaced 24 in. OC max. Studs 3/8 in. less in lengths than assembly height.

4. **Gypsum Board*** — (For 1 and 2 hour ratings when exposed on interior face only) — Any 5/8 in. thick UL Classified Gypsum Board that is eligible for use in Design Nos. L501, G512 or U305. **For a 1 hour rating**, nom. 5/8 in. thick, 4 ft wide, two layers applied vertically with joints centered over studs. Inner layer attached to studs and runners with 1 in. long, Type S screws located 5/8 to 3/4 in. from sides and ends of wallboard and spaced 12 in. OC. Face layer attached through inner layer into studs and runners with 1-5/8 in. long Type S screws located 5/8 to 3/4 in. from sides and ends of wallboard and spaced 18 in. OC. Joints to be staggered from the inner layer. **For a 2 hour rating**, nom. 5/8 in. thick, 4 ft wide, four layers applied vertically with joints centered over studs. Base layer attached to studs and runners with 1 in. long, Type S screws spaced 12 in. OC. Second layer attached through base layer into studs and runners with 1-5/8 in. long Type S screws spaced 18 in. OC. Third layer attached through base layer into studs and runners with 2-1/4 in. long Type S screws spaced 18 in. OC. Face layer attached through base layer into studs and runners with 3 in. long Type S screws spaced 18 in. OC. Joints to be staggered 24 in. from the inner layer joint. Screws offset a min. 6 in. from layer below.

AMERICAN GYPSUM CO ([View Classification](#)) — CKNX.R14196

BEIJING NEW BUILDING MATERIALS PUBLIC LTD CO ([View Classification](#)) — CKNX.R19374

CABOT MANUFACTURING ULC ([View Classification](#)) — CKNX.R25370

CERTAINTED GYPSUM INC ([View Classification](#)) — CKNX.R3660

CGC INC ([View Classification](#)) — CKNX.R19751

CERTAINTED GYPSUM INC ([View Classification](#)) — CKNX.R18482

GEORGIA-PACIFIC GYPSUM L L C ([View Classification](#)) — CKNX.R2717

LOADMASTER SYSTEMS INC ([View Classification](#)) — CKNX.R11809

NATIONAL GYPSUM CO ([View Classification](#)) — CKNX.R3501

PABCO BUILDING PRODUCTS L L C, DBA PABCO GYPSUM ([View Classification](#)) — CKNX.R7094

PANEL REY S A ([View Classification](#)) — CKNX.R21796

SIAM GYPSUM INDUSTRY (SARABURI) CO LTD ([View Classification](#)) — CKNX.R19262

THAI GYPSUM PRODUCTS PCL ([View Classification](#)) — CKNX.R27517

UNITED STATES GYPSUM CO ([View Classification](#)) — CKNX.R1319

USG BORAL DRYWALL SFZ LLC ([View Classification](#)) — CKNX. R38438

USG MEXICO S A DE C V ([View Classification](#)) — CKNX.R16089

4A. **Gypsum Board*** — (As an alternate to Item 4) — Nominal 5/8 in. thick, 4 ft wide panels, secured as described in Item 4.
PABCO BUILDING PRODUCTS L L C, DBA PABCO GYPSUM — Type QuietRock ES.

4B. **Gypsum Board*** — (For 1, 2 and 3 hour ratings when exposed on either side of wall) - Any 5/8 in. thick UL Classified Gypsum Board that is eligible for use in Design Nos. L501, G512 or U305. See Item 4 for list of Companies. **For a 1 hour rating**, 5/8 in. thick, 4 ft wide, attached to steel studs and floor and ceiling track with 1 in. long, Type S steel screws spaced 8 in. OC. along edges of board and 12 in. OC in the field of the board. Joints oriented vertically and staggered on opposite sides of the assembly. **For a 2 hour rating**, 5/8 in. thick, 4 ft wide, two layers applied vertically on both sides of studs with joints centered over studs. Base layer attached to studs and runners with 1 in. long, Type S screws spaced 16 in. OC starting 8 in. from the edge of the board with an additional screw placed 1-1/4 in. from each edge of board. Second layer attached through base layer into studs and runners with 1-5/8 in. long Type S screws spaced 16 in. OC starting 8 in. from each edge of the board with an additional screw placed 1-1/4 in. from each edge of the board. Joints to be staggered 24 in. from the inner layer joint. Screws offset a min. 6 in. from layer below. **For a 3 hour rating**, 5/8 in. thick, 4 ft wide, three layers applied vertically on both sides of studs with joints centered over. Base layer attached to studs and runners with 1 in. long, Type S screws spaced 24 in. OC. Second layer attached through base layer into studs and runners with 1-5/8 in. long Type S screws spaced 24 in. OC. Third layer attached through second and base layers into studs and runners with 2-1/4 in. long Type S screws spaced 12 in. OC. Joints to be staggered 24 in. from the inner layer joint. For all layers, an additional screw shall be placed 1-1/4 in. from the edge of the board. Screws offset a min. 6 in. from layer below.

4C. **Wall and Partition Facings and Accessories*** — (As an alternate to Item 4) — Nominal 5/8 in. thick, 4 ft wide panels, secured as described in Item 4.

PABCO BUILDING PRODUCTS L L C, DBA PABCO GYPSUM — Type QuietRock QR-527.

5. **Subgirts (optional)** — Hat or Z shaped min 1/2 in. deep, min .045 in. thick (18 gauge) galv steel, attached to studs, 48 in. OC with No. 14 self-tapping screws or No. 14 self-drilling screws.

6. **Batts and Blankets*** — (Optional) — Placed in stud cavities. Any glass fiber or mineral wool batt material bearing the UL Classification Marking as for Fire Resistance, of a thickness to completely fill the stud cavity.

See **Batts and Blankets** (BZJZ) Category for names of Classified companies.

*** Indicates such products shall bear the UL or cUL Certification Mark for jurisdictions employing the UL or cUL Certification (such as Canada), respectively.**

Last Updated on 2020-03-11

La presencia del nombre de una empresa o producto en esta base de datos no garantiza por sí misma que los productos así identificados hayan sido fabricados bajo el servicio de seguimiento de UL. Solo aquellos productos que lleven la marca UL deben considerarse como certificados y garantizados bajo el servicio de seguimiento de UL. Busque siempre la marca en el producto.

UL permite la reproducción del material contenido en el directorio de certificación en línea sujeta a las siguientes condiciones: 1. La información de la guía, las ensamblajes, las construcciones, los diseños, los sistemas y/o certificaciones (archivos) deben presentarse en su totalidad y de forma no engañosa, sin ninguna manipulación en los datos (o dibujos). 2. Debe aparecer la declaración "Reimpreso desde el directorio de certificaciones en línea con permiso de UL" junto al material extraído. Además, el material reimpreso debe incluir una nota de derechos de autor en el siguiente formato: "© 2021 UL LLC"