

BXUV.U376 - Fire-resistance Ratings - ANSI/UL 263

**Drywall Solutions**

Design/System/Construction/Assembly Usage Disclaimer

- Authorities Having Jurisdiction should be consulted in all cases as to the particular requirements covering the installation and use of UL Certified products, equipment, system, devices, and materials.
- Authorities Having Jurisdiction should be consulted before construction.
- Fire resistance assemblies and products are developed by the design submitter and have been investigated by UL for compliance with applicable requirements. The published information cannot always address every construction nuance encountered in the field.
- When field issues arise, it is recommended the first contact for assistance be the technical service staff provided by the product manufacturer noted for the design. Users of fire resistance assemblies are advised to consult the general Guide Information for each product category and each group of assemblies. The Guide Information includes specifics concerning alternate materials and alternate methods of construction.
- Only products which bear UL's Mark are considered Certified.

BXUV - Fire Resistance Ratings - ANSI/UL 263 Certified for United States

BXUV7 - Fire Resistance Ratings - CAN/ULC-S101 Certified for Canada

See General Information for Fire-resistance Ratings - ANSI/UL 263 Certified for United States
Design Criteria and Allowable Variances

See General Information for Fire Resistance Ratings - CAN/ULC-S101 Certified for Canada
Design Criteria and Allowable Variances

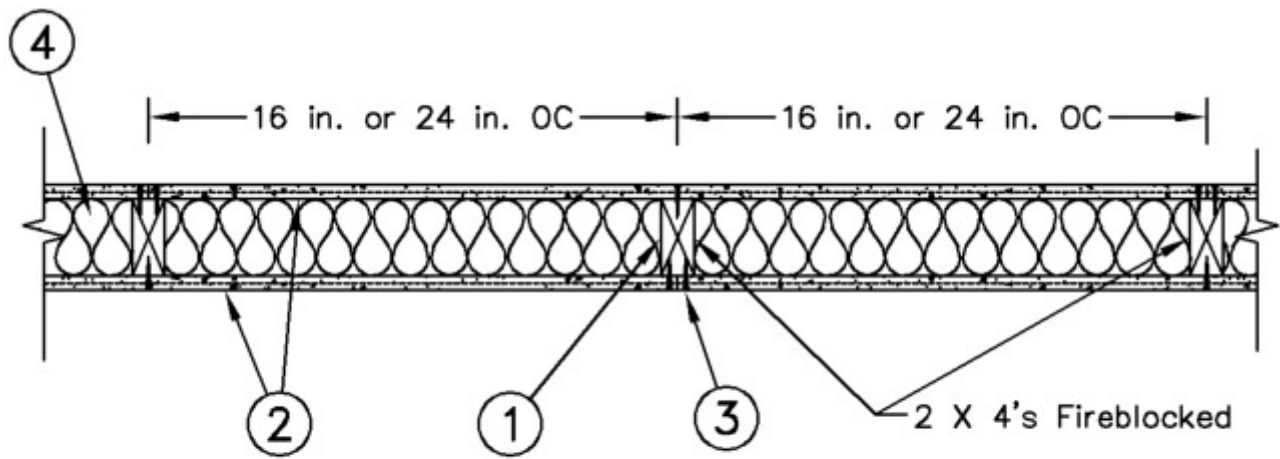
Design No. U376

March 11, 2020

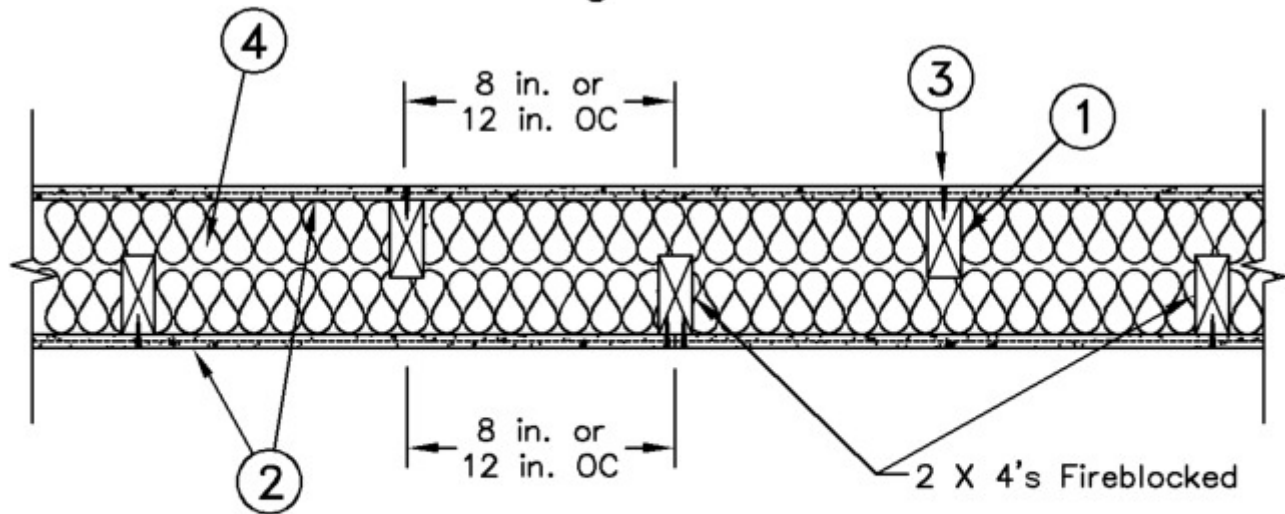
Bearing Wall Rating — 1 Hr.**Finish Rating — See Items 2, 2A, 2b or 2C.**

This design was evaluated using a load design method other than the Limit States Design Method (e.g., Working Stress Design Method). For jurisdictions employing the Limit States Design Method, such as Canada, a load restriction factor shall be used — See Guide BXUV or BXUV7

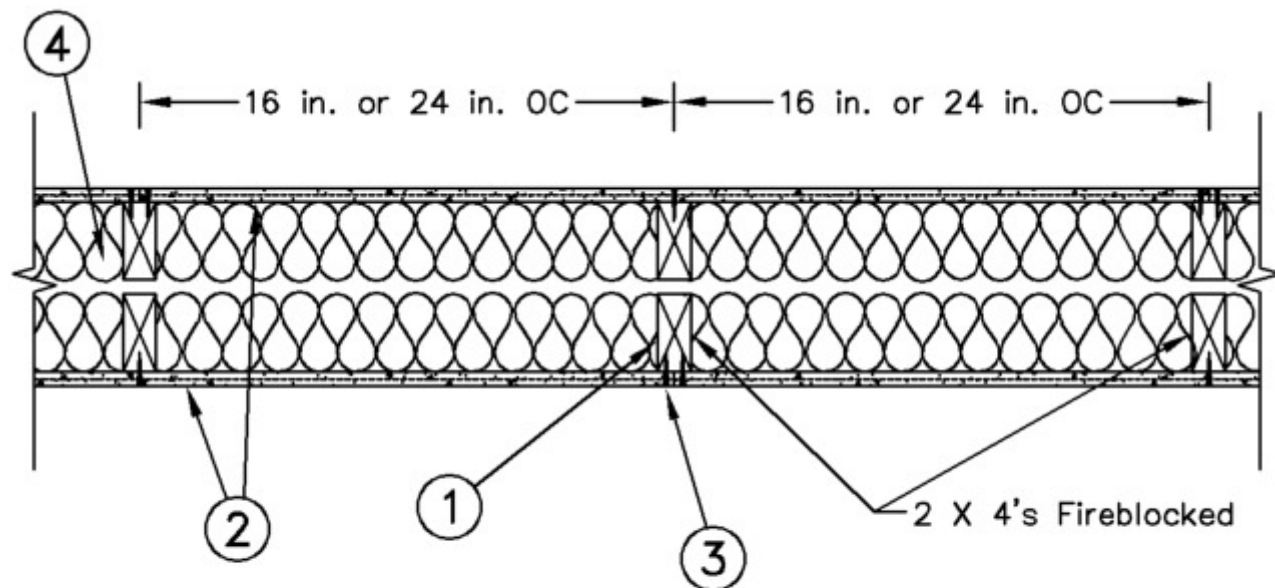
*** Indicates such products shall bear the UL or cUL Certification Mark for jurisdictions employing the UL or cUL Certification (such as Canada), respectively.**



Configuration A



Configuration B



Configuration C

1. **Wood Studs** — Nom 2 by 4 in., spaced 12, 16 or 24 in. OC as shown in Configurations A, B or C, effectively firestopped.

2. **Gypsum Board*** — Nominal 5/8 in. thick, 4 ft wide panels, applied vertically to studs and bearing plates with 1-5/8 in. long Type S screws spaced 12 in. OC at perimeter of panels and 8 in. OC in the field. Vertical joints need not be staggered on opposite sides of wall. Horizontal joints of vertically applied panels need not be backed by studs.

PABCO BUILDING PRODUCTS L L C, DBA PABCO GYPSUM — QuietRock 530 (finish rating 23 min)

2A. **Gypsum Board*** — (As an alternate to Item 2) — Nominal 5/8 in. thick, 4 ft wide panels, applied vertically. Panels nailed 7 in. OC with 6d cement coated nails 1-7/8 in. long, 0.0915 in. shank diam and 15/64 in. diam heads. Horizontal joints of vertically applied panels to be backed by studs.

PABCO BUILDING PRODUCTS L L C, DBA PABCO GYPSUM — Type QuietRock ES

2B. **Wall and Partition Facings and Accessories*** — (As an alternate to Items 2 and 2A) — Nominal 5/8 in. thick, 4 ft wide panels, applied vertically. Panels nailed 7 in. OC with 6d cement coated nails 1-7/8 in. long, 0.0915 in. shank diam and 15/64 in. diam heads. Horizontal joints of vertically applied panels to be backed by studs.

PABCO BUILDING PRODUCTS L L C, DBA PABCO GYPSUM — Type QuietRock 527

2C. **Gypsum Board*** — (As an alternate to Items 2 through and 2B; acceptable for use with Configuration A when the studs are spaced 16 in. or 24 in. OC) — 5/8 in. thick, 4 ft wide, applied either horizontally or vertically to one side of the assembly, nailed to studs and bearing plates with 6d cement coated nails 1-7/8 in. long, 0.0915 in. shank diam and 1/4 in. diam heads spaced 7 in. OC. Finish rating 27 min.

AMERICAN GYPSUM CO — Types AGX-1, M-Glass, AG-C, LightRoc

BEIJING NEW BUILDING MATERIALS PUBLIC LTD CO — Type DBX-1

CERTAINTED GYPSUM INC — Types EGRG, GlasRoc, GlasRoc-2, or Type C

CERTAINTED GYPSUM INC — Types LGFC6A, LGFC2A, LGFC-C/A, LGFC-WD

GEORGIA-PACIFIC GYPSUM L L C — Types 5, 9, C, DAP, DD, DA, DGG, DS, GPFS6, Type X, Veneer Plaster Base - Type X, Water Rated - Type X, Sheathing - Type X, Soffit - Type X, Type TG-C, GreenGlass Type X, Type LWX, Veneer Plaster Base-Type LWX, Water Rated-Type LWX, Sheathing Type-LWX, Soffit-Type LWX, Type DGLW, Water Rated-Type DGLW, Sheathing Type- DGLW, Soffit-Type DGLW, Type LW2X, Veneer Plaster Base - Type LW2X, Water Rated - Type LW2X, Sheathing - Type LW2X, Soffit - Type LW2X, Type DGL2W, Water Rated - Type DGL2W, Sheathing - Type DGL2W

NATIONAL GYPSUM CO — Types FSK-C, FSW, FSW-3, FSW-5, FSW-C, FSW-G

PABCO BUILDING PRODUCTS L L C, DBA PABCO GYPSUM — Type C, PG-9 or PG-C

PANEL REY S A — Type PRX, PRC, PRC2, GREX, GRIX, RHX, MDX or ETX

SIAM GYPSUM INDUSTRY (SARABURI) CO LTD — Type EX-1

THAI GYPSUM PRODUCTS PCL — Type C

2D. Gypsum Board* — (As an alternate to Items 2 through 2C; acceptable for use with Configuration A only when the studs are spaced 16 in. OC only) — 5/8 in. thick, 4 ft wide, applied either horizontally or vertically to one side of the assembly, nailed to studs and bearing plates with 6d cement coated nails 1-7/8 in. long, 0.0915 in. shank diam and 15/64 in. diam heads spaced 7 in. OC.

AMERICAN GYPSUM CO — Types AGX-1 (finish rating 23 min.), M-Glass (finish rating 23 min.), AGX-11 (finish rating 26 min) AG-C, LightRoc (finish rating 23 min.)

BEIJING NEW BUILDING MATERIALS PUBLIC LTD CO — Type DBX-1 (finish rating 24 min)

CERTAINTED GYPSUM INC — Type C, Type X, Type X-1 (finish rating 26 min), Easi-Lite Type X-2, Type EGRG (finish rating 23 min)

CGC INC — Type AR (finish rating 26 min), Type C (finish rating 26 min), Type FCV (finish rating 26 min), Type IP-AR (finish rating 26 min), Type IPC-AR (finish rating 26 min), Type IP-X1 (finish rating 26 min), Type IP-X2 (finish rating 26 min), Type SCX (finish rating 26 min), Type SHX (finish rating 26 min), Type WRC (finish rating 26 min), Type WRX (finish rating 26 min)

CERTAINTED GYPSUM INC — Type LGFC6A (finish rating 34 min), Type LGFC2A, Type LGFC-C/A. Type LGFC-WD

GEORGIA-PACIFIC GYPSUM L L C — Type 5 (finish rating 26 min), Type 6 (finish rating 23 min), Type 9 (finish rating 26 min), Type C (finish rating 26 min), Type DGG (finish rating 20 min), Type GPFS1 (finish rating 20 min), Type GPFS2 (finish rating 20 min), Type GPFS6 (finish rating 26 min), Type DS, Type DAP, Type DD (finish rating 20 min), DA, Type X, Veneer Plaster Base - Type X, Water Rated - Type X, Sheathing - Type X, Soffit - Type X, TG-C or GreenGlass Type X, Type LWX, Veneer Plaster Base-Type LWX, Water Rated-Type LWX, Sheathing Type-LWX, Soffit-Type LWX, Type DGLW, Water Rated-Type DGLW, Sheathing Type- DGLW, Soffit-Type DGLW, Type LW2X, Veneer Plaster Base - Type LW2X, Water Rated - Type LW2X, Sheathing - Type LW2X, Soffit - Type LW2X, Type DGL2W, Water Rated - Type DGL2W, Sheathing - Type DGL2W

NATIONAL GYPSUM CO — Type FSK (finish rating 20 min), Type FSK-G (finish rating 20 min), Type FSW (finish rating 20 min), Type FSW-2 (finish rating 24 min), Type FSW-3 (finish rating 20 min), Type FSW-5 (finish rating 22 min), Type FSW-G (finish rating 20 min), Type FSK-C (finish rating 20 min), Type FSW-C (finish rating 20 min)

PABCO BUILDING PRODUCTS L L C, DBA PABCO GYPSUM — Types C, PG-2 (finish rating 20 min), PG-3 (finish rating 20 min), Types PG-3W, PG-5W (finish rating 20 min), Type PG-4 (finish rating 20 min), Type PG-6 (finish rating 23 min), Types PG-3WS, PG-5WS (finish rating 20 min), Types PG-5, PG-9 (finish rating 26 min) or Type PG-C

PANEL REY S A — Types PRX, PRC, PRC2

SIAM GYPSUM INDUSTRY (SARABURI) CO LTD — Type EX-1 (finish rating 26 min)

THAI GYPSUM PRODUCTS PCL — Type C or Type X

UNITED STATES GYPSUM CO — Type AR (finish rating 26 min), Type SCX (finish rating 26 min), Type C (finish rating 26 min), Type WRX (finish rating 26 min), Type WRC (finish rating 26 min), Type IP-X1 (finish rating 26 min), Type FCV (finish rating 26 min), Type IP-X2 (finish rating 26 min), Type SHX (finish rating 26 min), Type FRX-G (finish rating 29 min), Type IP-AR (finish rating 26 min), Type IPC-AR (finish rating 26 min)

USG MEXICO S A DE C V — Type AR (finish rating 26 min), Type C (finish rating 26 min), Type WRX (finish rating 26 min), Type WRC (finish rating 26 min), Type IP-X1 (finish rating 26 min), Type FCV (finish rating 26 min), Type IP-X2 (finish rating 26 min), Type SHX (finish rating 26 min), SCX (finish rating 26 min), Type IP-AR (finish rating 26 min), Type IPC-AR (finish rating 26 min)

2E. Gypsum Board* — (As an alternate to Items 2 through 2D; acceptable for use with Configuration B) — 5/8 in. thick, 4 ft wide, applied either horizontally or vertically to one side of the assembly, nailed to studs and bearing plates with 6d cement coated nails 1-7/8 in. long, 0.0915 in. shank diam and 1/4 in. diam heads spaced 7 in. OC.

AMERICAN GYPSUM CO — Type AG-C

CERTAINTED GYPSUM INC — Type C

CGC INC — Types C, IP-X2 (Finish rating 26 min)

CERTAINTED GYPSUM INC — Types LGFC-C, LGFC-C/A

GEORGIA-PACIFIC GYPSUM L L C — Type 5 (Finish rating 26 min), TG-C

NATIONAL GYPSUM CO — Types FSK-C, FSW-C, FSW-G

PABCO BUILDING PRODUCTS L L C, DBA PABCO GYPSUM — Type C or PG-C

THAI GYPSUM PRODUCTS PCL — Type C

UNITED STATES GYPSUM CO — Types C, IP-X2 (Finish rating 26 min)

2F. Gypsum Board* — (As an alternate to Items 2 through 2E; acceptable for use with Configuration C) — Nom 5/8 in. thick, 4 ft wide, applied either horizontally or vertically to one side of the assembly, nailed to studs and bearing plates with 6d cement coated nails 1-7/8 in. long, 0.0915 in. shank diam and 1/4 in. diam heads spaced 7 in. OC.

Any UL Classified Gypsum Board that is eligible for use in Design Nos. L501, G512 or U305. See **Gypsum Board*** (CKNX) category for names of Classified companies.

2G. Gypsum Board* — (As an alternate to Items 2 through and 2F; acceptable for use with Configuration A and C when the studs are spaced 16 in. or 24 in. OC) — 5/8 in. thick gypsum panels, with beveled, square, or tapered edges, applied either horizontally or vertically. Gypsum panels fastened to framing with 1-1/4 in. long Type W coarse thread gypsum panel steel screws spaced a max 8 in. OC, with last screw 1 in. from edge of board. When used in widths of other than 48 in., gypsum boards are to be installed horizontally.

AMERICAN GYPSUM CO — Types AGX-1, M-Glass, Type AG-C, LightRoc.

2H. Gypsum Board* — (As an alternate to Items 2 through and 2G; acceptable for use with Configuration A when the studs are spaced 16 in. OC) — 5/8 in. thick gypsum panels, with beveled, square, or tapered edges, applied either horizontally or vertically. Gypsum panels fastened to framing with 1-1/4 in. long Type W coarse thread gypsum panel steel screws spaced a max 8 in. OC, with last screw 1 in. from edge of board. When used in widths of other than 48 in., gypsum boards are to be installed horizontally.

AMERICAN GYPSUM CO — Type AGX-11.

2I. Gypsum Board* — (As an alternate to Items 2 through and 2H; acceptable for use with Configuration B) — 5/8 in. thick gypsum panels, with beveled, square, or tapered edges, applied either horizontally or vertically. Gypsum panels fastened to framing with 1-1/4 in. long Type W coarse thread gypsum panel steel screws spaced a max 8 in. OC, with last screw 1 in. from edge of board. When used in widths of other than 48 in., gypsum boards are to be installed horizontally.

AMERICAN GYPSUM CO — Type AG-C.

2J. Gypsum Board* — (As an alternate to Items 2 through and 2I; acceptable for use with Configuration C) — 5/8 in. thick gypsum panels, with beveled, square, or tapered edges, applied either horizontally or vertically. Gypsum panels fastened to framing with 1-1/4 in. long Type W coarse thread gypsum panel steel screws spaced a max 8 in. OC, with last screw 1 in. from edge of board. When used in widths of other than 48 in., gypsum boards are to be installed horizontally.

AMERICAN GYPSUM CO — Types AGX-1, AGX-11, M-Glass, AG-C, LightRoc.

2K. Gypsum Board* — (As an alternate to Items 2 through and 2J) — 5/8 in. thick gypsum panels, with beveled, square, or tapered edges, applied either horizontally or vertically. Gypsum panels fastened to framing with 1-1/4 in. long Type W coarse thread gypsum panel steel screws spaced a max 8 in. OC, with last screw 1 in. from edge of board. When used in widths of other than 48 in., gypsum boards are to be installed horizontally.

NATIONAL GYPSUM CO — Type FSK, Type FSK-G, Type FSW, Type FSW-3, Type FSW-5, Type FSW-G, Type FSK-C, Type FSW-C, Type FSMR-C, Type FSW-6, Type FSL

3. Joints and Screwheads — Panel joints covered with paper tape and two layers of joint compound. Screwheads covered with two layers of joint compound.

4. Batts and Blankets* — Glass fiber insulation, nom 3-1/2 in. thick, min. density of 0.80 pcf, with a flame spread of 25 or less and a smoke developed of 50 or less, friction-fitted to completely fill the stud cavities. See **Batts and Blankets** Category (BKNV) for names of manufacturers.

*** Indicates such products shall bear the UL or cUL Certification Mark for jurisdictions employing the UL or cUL Certification (such as Canada), respectively.**

Last Updated on 2020-03-11

La presencia del nombre de una empresa o producto en esta base de datos no garantiza por sí misma que los productos así identificados hayan sido fabricados bajo el servicio de seguimiento de UL. Solo aquellos productos que lleven la marca UL deben considerarse como certificados y garantizados bajo el servicio de seguimiento de UL. Busque siempre la marca en el producto.

UL permite la reproducción del material contenido en el directorio de certificación en línea sujeta a las siguientes condiciones: 1. La información de la guía, las ensamblajes, las construcciones, los diseños, los sistemas y/o certificaciones (archivos) deben presentarse en su totalidad y de forma no engañosa, sin ninguna manipulación en los datos (o dibujos). 2. Debe aparecer la declaración "Reimpreso desde el directorio de certificaciones en línea con permiso de UL" junto al material extraído. Además, el material reimpreso debe incluir una nota de derechos de autor en el siguiente formato: "© 2021 UL LLC"