

# BXUV.U449 - Fire-resistance Ratings - ANSI/UL 263



## Drywall Solutions

Design/System/Construction/Assembly Usage Disclaimer

- Authorities Having Jurisdiction should be consulted in all cases as to the particular requirements covering the installation and use of UL Certified products, equipment, system, devices, and materials.
- Authorities Having Jurisdiction should be consulted before construction.
- Fire resistance assemblies and products are developed by the design submitter and have been investigated by UL for compliance with applicable requirements. The published information cannot always address every construction nuance encountered in the field.
- When field issues arise, it is recommended the first contact for assistance be the technical service staff provided by the product manufacturer noted for the design. Users of fire resistance assemblies are advised to consult the general Guide Information for each product category and each group of assemblies. The Guide Information includes specifics concerning alternate materials and alternate methods of construction.
- Only products which bear UL's Mark are considered Certified.

## BXUV - Fire Resistance Ratings - ANSI/UL 263 Certified for United States

## BXUV7 - Fire Resistance Ratings - CAN/ULC-S101 Certified for Canada

[See General Information for Fire-resistance Ratings - ANSI/UL 263 Certified for United States Design Criteria and Allowable Variances](#)

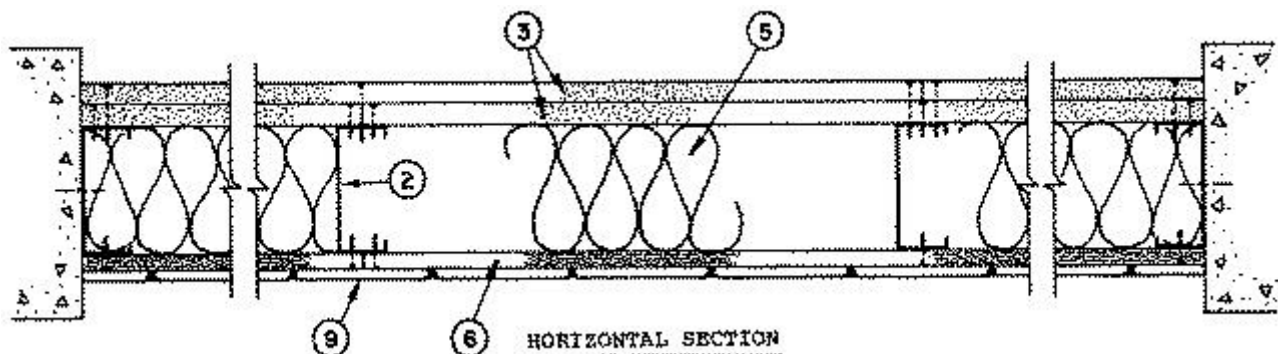
[See General Information for Fire Resistance Ratings - CAN/ULC-S101 Certified for Canada Design Criteria and Allowable Variances](#)

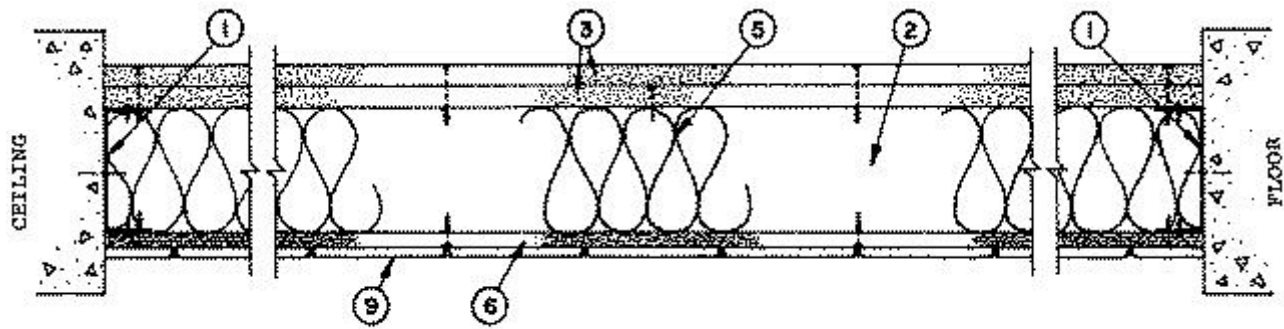
### Design No. U449

March 12, 2020

### Nonbearing Wall Rating — 1-1/2 HR.

**\* Indicates such products shall bear the UL or cUL Certification Mark for jurisdictions employing the UL or cUL Certification (such as Canada), respectively.**





VERTICAL SECTION

1. **Floor and Ceiling Runners** — Channel-shaped runners, 3-5/8 in. wide by 1-3/8 in. deep, fabricated from No. 20 MSG galvanized steel. Attached to floor and ceiling with fasteners 24 in. OC maximum.
2. **Studs** — Channel-shaped, 3-5/8 in. wide by 1-3/8 in. deep with 5/16 in. folded back return flange legs. Fabricated from No. 20 MSG galvanized steel. Maximum stud spacing 16 in. OC. Studs to be cut 1 in. less than assembly height.
3. **Gypsum Board\*** — Any 5/8 in. thick **UL Classified Gypsum Board that is eligible for use in Design Nos. L501, G512 or U305.** Two layers, applied vertically, nom 5/8 in. thick. The first layer was attached to the studs with 1 in. long self-drilling, self-tapping screws, spaced 24 in. OC. The second layer was attached to the studs with 1-5/8 in. long self-drilling, self-tapping screws spaced 12 in. OC.

**AMERICAN GYPSUM CO** ([View Classification](#)) — CKNX.R14196

**BEIJING NEW BUILDING MATERIALS PUBLIC LTD CO** ([View Classification](#)) — CKNX.R19374

**CABOT MANUFACTURING ULC** ([View Classification](#)) — CKNX.R25370

**CERTAINTED GYPSUM INC** ([View Classification](#)) — CKNX.R3660

**CGC INC** ([View Classification](#)) — CKNX.R19751

**CERTAINTED GYPSUM INC** ([View Classification](#)) — CKNX.R18482

**GEORGIA-PACIFIC GYPSUM L L C** ([View Classification](#)) — CKNX.R2717

**LOADMASTER SYSTEMS INC** ([View Classification](#)) — CKNX.R11809

**NATIONAL GYPSUM CO** ([View Classification](#)) — CKNX.R3501

**PABCO BUILDING PRODUCTS L L C, DBA PABCO GYPSUM** ([View Classification](#)) — CKNX.R7094

**PANEL REY S A** ([View Classification](#)) — CKNX.R21796

**SIAM GYPSUM INDUSTRY (SARABURI) CO LTD** ([View Classification](#)) — CKNX.R19262

**THAI GYPSUM PRODUCTS PCL** ([View Classification](#)) — CKNX.R27517

**UNITED STATES GYPSUM CO** ([View Classification](#)) — CKNX.R1319

**USG BORAL DRYWALL SFZ LLC** ([View Classification](#)) — CKNX.R38438

**USG MEXICO S A DE C V** ([View Classification](#)) — CKNX.R16089

**3A. Gypsum Board\*** — (As an alternate to Item 3) — Nominal 5/8 in. thick, 4 ft wide panels, secured as described in Item 3.  
**PABCO BUILDING PRODUCTS L L C, DBA PABCO GYPSUM** — Type QuietRock ES.

**3B. Wall and Partition Facings and Accessories\*** — (As an alternate to Item 3 and 3A) — Nominal 5/8 in. thick, 4 ft wide panels, secured as described in Item 3.

**PABCO BUILDING PRODUCTS L L C, DBA PABCO GYPSUM** — Type Type QuietRock 527.

**4. Gypsum Board Joints** — (Not Shown) — 2 in. perforated tape and joint compound.

**5. Batts and Blankets\*** — Placed to fill interior of stud cavity 3-5/8 in. thick, having a minimum nominal density of 3.5 pcf. See **Batts and Blankets\*** (BZJZ) Category for names and addresses.

**6. Mineral and Fiber Board\*** — 7/16 in. thick, square edge boards attached to studs with 1-1/4 in. self-tapping, self-drilling screws, spaced 6 in. OC along the edges of the board and 8 in. OC in the field of the board.

**PLYCEM CONSTRUSISTEMAS EL SALVADOR S A DE C V** — Types Fibrolit 100, Panelit, Plycem, Plycem-Fibrolit.

**PLYCEM CONSTRUSISTEMAS HONDURAS S A DE C V** — Types Fibrolit 100, Panelit , Plycem, Plycem-Fibrolit.

**THE PLYCEM COMPANY INC** — Types Fibrolit 100, Panelit , Plycem, Plycem-Fibrolit.

**7. Batten Strips** — (Not Shown) — Galvanized steel strips, 1-1/2 in. wide, No. 20 MSG. Fastened to studs at horizontal joints of mineral and fiber boards (Item 6) with 1/2 in. long pan head S-12 steel screws.

**8. Mineral and Fiber Board Joints** — (Not Shown) — 1 in. wide masking tape covered with 2 in. wide adhesive backed 3/32 in. mesh pattern glass fiber tape.

**9. Ceramic Tile Mortar** — (Not Shown) — Mortar consisting of two parts Portland cement, two parts silica sand and one part latex rubber additive by weight. Applied to mineral and fiber boards with a 1/4 in. notched trowel to nominal thickness of 1/8 in.

**10. Ceramic Tile** — Nominal 4-1/4 by 4-1/4 by 0.298 in. thick tiles pushed into mortar.

**11. Ceramic Tile Grout** — (Not Shown) — Grout consisting of two parts dry powder grout mixture to one part latex admixture, by volume, to fill ceramic tile joints.

**\* Indicates such products shall bear the UL or cUL Certification Mark for jurisdictions employing the UL or cUL Certification (such as Canada), respectively.**

Last Updated on 2020-03-12

La presencia del nombre de una empresa o producto en esta base de datos no garantiza por sí misma que los productos así identificados hayan sido fabricados bajo el servicio de seguimiento de UL. Solo aquellos productos que lleven la marca UL deben considerarse como certificados y garantizados bajo el servicio de seguimiento de UL. Busque siempre la marca en el producto.

UL permite la reproducción del material contenido en el directorio de certificación en línea sujeta a las siguientes condiciones: 1. La información de la guía, las ensamblajes, las construcciones, los diseños, los sistemas y/o certificaciones (archivos) deben presentarse en su totalidad y de forma no engañosa, sin ninguna manipulación en los datos (o dibujos). 2. Debe aparecer la declaración "Reimpreso desde el directorio de certificaciones en línea con permiso de UL" junto al material extraído. Además, el material reimpreso debe incluir una nota de derechos de autor en el siguiente formato: "© 2021 UL LLC"