

## BXUV.U505 - Fire-resistance Ratings - ANSI/UL 263

**Drywall Solutions**

Design/System/Construction/Assembly Usage Disclaimer

- Authorities Having Jurisdiction should be consulted in all cases as to the particular requirements covering the installation and use of UL Certified products, equipment, system, devices, and materials.
- Authorities Having Jurisdiction should be consulted before construction.
- Fire resistance assemblies and products are developed by the design submitter and have been investigated by UL for compliance with applicable requirements. The published information cannot always address every construction nuance encountered in the field.
- When field issues arise, it is recommended the first contact for assistance be the technical service staff provided by the product manufacturer noted for the design. Users of fire resistance assemblies are advised to consult the general Guide Information for each product category and each group of assemblies. The Guide Information includes specifics concerning alternate materials and alternate methods of construction.
- Only products which bear UL's Mark are considered Certified.

---

BXUV - Fire Resistance Ratings - ANSI/UL 263 Certified for United States

BXUV7 - Fire Resistance Ratings - CAN/ULC-S101 Certified for Canada

[See General Information for Fire-resistance Ratings - ANSI/UL 263 Certified for United States Design Criteria and Allowable Variances](#)

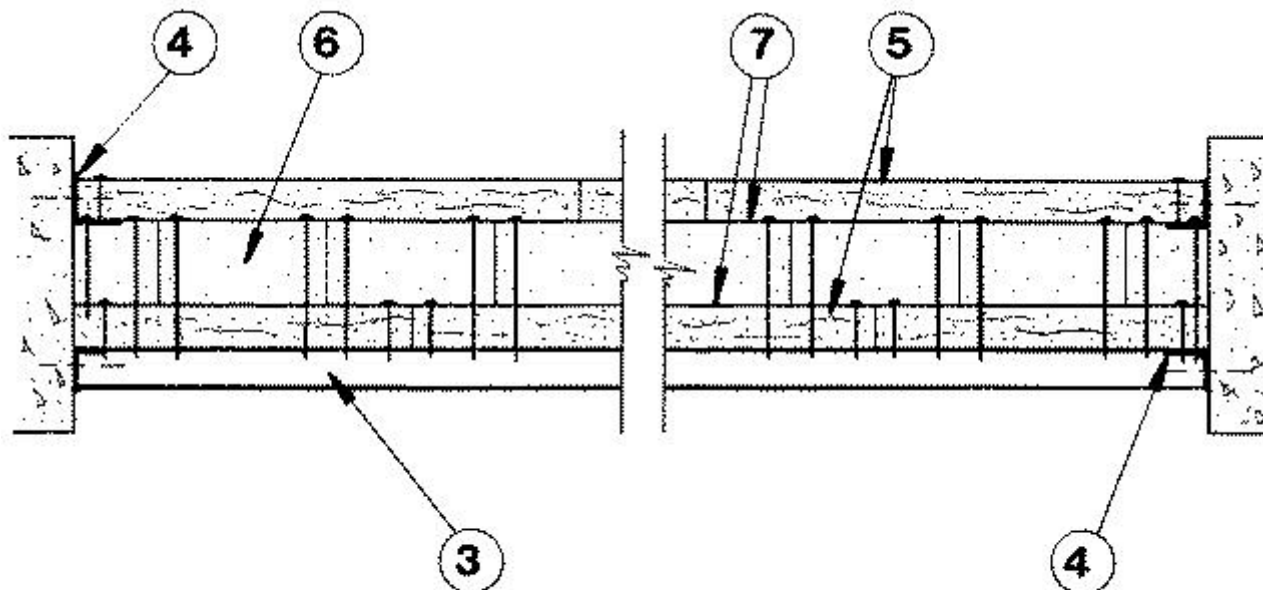
[See General Information for Fire Resistance Ratings - CAN/ULC-S101 Certified for Canada Design Criteria and Allowable Variances](#)

**Design No. U505**

October 08, 2020

**Nonbearing Wall Rating — 2 HR.**

**\* Indicates such products shall bear the UL or cUL Certification Mark for jurisdictions employing the UL or cUL Certification (such as Canada), respectively.**



## HORIZONTAL SECTION

1. **Floor Angles** — 3/4 by 1-1/4 in. fabricated from 22 MSG galv steel, short leg attached to concrete or masonry with fasteners spaced 24 in. OC.
2. **Ceiling Runner** — Channel-shaped, 1 in. deep by 1-5/8 in. wide, fabricated from 25 MSG galv steel, or two 3/4 by 1-1/4 in. angles fabricated from 22 MSG galv steel, attached to ceiling with fasteners spaced 24 in. OC.
3. **Horizontal Bracing Angles** — 3/4 by 1-1/4 in., fabricated from 22 MSG galv steel, spacing between angles not to exceed 5 ft, long leg screw attached to wallboard.
4. **Side Angles** — 3/4 by 1-1/4 in. fabricated from 22 MSG galv steel, 30 in. long sections spaced vertically not more than 5 ft OC.
5. **Gypsum Board\*** — 5/8 in. thick, 4 ft wide. Inner layer applied vertically and attached to floor, side, and bracing angles with 0.127 in. diam by 1 in. long, self-drilling, self-tapping, Phillips head steel screws spaced 16 in. OC. Outer layer applied vertically and secured to floor and side angles and ceiling runner or angle with 0.127 in. diam by 1 in. long steel screws spaced 12 in. OC. Joints between inner and outer layer staggered.

**AMERICAN GYPSUM CO** — Types AGX-1, M-Glass, AG-C, LightRoc.

**BEIJING NEW BUILDING MATERIALS PUBLIC LTD CO** — Type DBX-1.

**CABOT MANUFACTURING ULC** — Type X, 5/8 Type X, Type Blueglass Exterior Sheathing

**CERTAINTED GYPSUM INC** — Types EGRG, GlasRoc, GlasRoc-2, Type C, SilentFX, Type X, Type X-1, Easi-Lite Type X-2, 5/8" Easi-Lite Type X.

**CGC INC** — Types AR, C, IP-AR, IP-X1, IP-X2, IPC-AR, SCX, SHX, ULX, USGX (Joint tape and compound, Item 8, optional for use with Type USGX), WRC or WRX.

**CERTAINTED GYPSUM INC** — Types LGFC2A, LGFC6A, LGFC-C/A, LGFC-WD, LGLLX, CLLX.

**GEORGIA-PACIFIC GYPSUM L L C** — Types 5, 6, 9, C, DA, DAP, DAPC, DGG, DS, GPFS6, LS, TG-C, Type X, Veneer Plaster Base-Type X, Water Rated-Type X, Sheathing Type-X, Soffit-Type X, GreenGlass Type X, Type X ComfortGuard Sound Deadening Gypsum Board, Type LWX, Veneer Plaster Base-Type LWX, Water Rated-Type LWX, Sheathing Type-LWX, Soffit-Type LWX, Type DGLW, Water

Rated-Type DGLW, Sheathing Type- DGLW, Soffit-Type DGLW, Type LW2X, Veneer Plaster Base - Type LW2X, Water Rated - Type LW2X, Sheathing - Type LW2X, Soffit - Type LW2X, Type DGL2W, Water Rated - Type DGL2W, Sheathing - Type DGL2W.

**NATIONAL GYPSUM CO** — Types eXP-C, FSW, FSK, FSW-G, FSW-C, FSK-C, FSW-3, FSW-6, FSW-8, FSMR-C, FSL, Type SBWB, RSX.

**NATIONAL GYPSUM CO** — Riyadh, Saudi Arabia — Type FR, or WR.

**PABCO BUILDING PRODUCTS L L C, DBA PABCO GYPSUM** — Type C, PG-5, PG-9, PG-11, PG-C, PGS-WRS, PGI

**PANEL REY S A** — Type PRX2

**SAINT-GOBAIN GYPROC MIDDLE EAST FZE** — Type Gyproc FireStop, Gyproc FireStop MR, Gyproc FireStop M2TECH, Gyproc FireStop ACTIV'Air, Gyproc FireStop MR ACTIV'Air, Gyproc FireStop M2TECH ACTIV'Air, Gyproc DuraLine, Gyproc DuraLine MR, Gyproc DuraLine M2TECH, Gyproc DuraLine ACTIV'Air, Gyproc DuraLine MR ACTIV'Air, Gyproc DuraLine M2TECH ACTIV'Air

**SIAM GYPSUM INDUSTRY (SARABURI) CO LTD** — Type EX-1

**THAI GYPSUM PRODUCTS PCL** — Type C, Type X.

**UNITED STATES GYPSUM CO** — Type AR, C, IP-AR, IP-X1, IP-X2, IPC-AR, SCX, SHX, ULX, WRC, WRX, USGX (Joint tape and compound, Item 8, optional for use with Type USGX), ULIX.

**USG BORAL DRYWALL SFZ LLC** — Types C, SCX, USGX (Joint tape and compound, Item 8, optional for use with Type USGX).

**USG MEXICO S A DE C V** — Type AR, C, IP-AR, IP-X1, IP-X2, IPC-AR, SCX, SHX, ULX, USGX (Joint tape and compound, Item 8, optional for use with Type USGX), WRC or WRX.

**5A. Gypsum Board\*** — (As an alternate to Item 5) — Nom 3/4 in. thick, 4 ft wide, installed as described in Item 5 with screw length increased to 1-1/4 in.

**CGC INC** — Types AR, IP-AR.

**UNITED STATES GYPSUM CO** — Types AR, IP-AR.

**USG MEXICO S A DE C V** — Types AR, IP-AR.

**5B. Gypsum Board\*** — (As an alternate to Item 5 and 5A) — Nominal 5/8 in. thick, 4 ft wide panels, secured as described in Item 5.

**PABCO BUILDING PRODUCTS L L C, DBA PABCO GYPSUM** — Type QuietRock ES.

**5C. Wall and Partition Facings and Accessories\*** — (As an alternate to Item 5 through 5B) — Nominal 5/8 in. thick, 4 ft wide panels, secured as described in Item 5.

**PABCO BUILDING PRODUCTS L L C, DBA PABCO GYPSUM** — Type QuietRock QR-527.

**6. Gypsum Board\*** — 1 in. thick, 2 ft wide gypsum wallboard with square edges may be used. Attached to floor angles and ceiling runners and to horizontal bracing angles, with tapping, Phillips head steel screws spaced 12 in. OC Joints between core board and wallboard staggered.

**CGC INC** — Type SLX.

**UNITED STATES GYPSUM CO** — Type SLX.

**USG BORAL DRYWALL SFZ LLC** — Type SLX

**USG MEXICO S A DE C V** — Type SLX.

**6A. Gypsum Board\*** — As an alternate to Item 6, 1 in. thick gypsum wallboard liner panels, supplied in nominal 24 in. widths. Attached to floor angles and ceiling runners, and to horizontal bracing angles, with 0.127 in. diam by 2-1/4 in. long, self-drilling, self-tapping, Phillips head steel screws spaced 12 in. OC. Joints between core board and wallboard staggered.

**NATIONAL GYPSUM CO** — Types FSW, FSW-B, FSW-7, FSW-9

**6B. Gypsum Board\*** — As an alternate to Item 6, 1 in. thick gypsum wallboard liner panels, supplied in nominal 24 in. widths. Attached to floor angles and ceiling runners, and to horizontal bracing angles, with 0.127 in. diam by 2-1/4 in. long, self-drilling, self-tapping, Phillips head steel screws spaced 12 in. OC. Joints between core board and wallboard staggered.

**CERTAINTED GYPSUM INC** — Type LGFCSL

**6C. Gypsum Board\*** — As an alternate to Item 6, 1 in. thick gypsum wallboard liner panels, supplied in nominal 24 in. widths. Attached to floor angles and ceiling runners, and to horizontal bracing angles, with 0.127 in. diam by 2-1/4 in. long, self-drilling, self-tapping, Phillips head steel screws spaced 12 in. OC. Joints between core board and wallboard staggered.

**GEORGIA-PACIFIC GYPSUM L L C** — Types DGUSL, TRSL and TP-6

**7. Laminating Compound** — Of the type used in joint treatment, mixed with water in accordance with instructions shown on containers, applied with an applicator producing beads about 5/16 in. in diam spaced 1-3/4 in. OC. Outer layer of wallboard temporarily nailed to core board until compound sets. Nails removed and holes filled with compound.

**8. Joints** — (Not shown) — Wallboard joints exposed or covered with fiber tape and joint compound. As an alternate, nominal 3/32 in. thick gypsum veneer plaster may be applied to the entire surface of Classified veneer baseboard. Joints reinforced.

**\* Indicates such products shall bear the UL or cUL Certification Mark for jurisdictions employing the UL or cUL Certification (such as Canada), respectively.**

Last Updated on 2020-10-08

---

La presencia del nombre de una empresa o producto en esta base de datos no garantiza por sí misma que los productos así identificados hayan sido fabricados bajo el servicio de seguimiento de UL. Solo aquellos productos que lleven la marca UL deben considerarse como certificados y garantizados bajo el servicio de seguimiento de UL. Busque siempre la marca en el producto.

UL permite la reproducción del material contenido en el directorio de certificación en línea sujeta a las siguientes condiciones: 1. La información de la guía, las asambleas, las construcciones, los diseños, los sistemas y/o certificaciones (archivos) deben presentarse en su totalidad y de forma no engañosa, sin ninguna manipulación en los datos (o dibujos). 2. Debe aparecer la declaración "Reimpreso desde el directorio de

certificaciones en línea con permiso de UL" junto al material extraído. Además, el material reimpresso debe incluir una nota de derechos de autor en el siguiente formato: "© 2021 UL LLC"