

# BXUV.U528 - Fire-resistance Ratings - ANSI/UL 263



## Design/System/Construction/Assembly Usage Disclaimer

- Authorities Having Jurisdiction should be consulted in all cases as to the particular requirements covering the installation and use of UL Certified products, equipment, system, devices, and materials.
- Authorities Having Jurisdiction should be consulted before construction.
- Fire resistance assemblies and products are developed by the design submitter and have been investigated by UL for compliance with applicable requirements. The published information cannot always address every construction nuance encountered in the field.
- When field issues arise, it is recommended the first contact for assistance be the technical service staff provided by the product manufacturer noted for the design. Users of fire resistance assemblies are advised to consult the general Guide Information for each product category and each group of assemblies. The Guide Information includes specifics concerning alternate materials and alternate methods of construction.
- Only products which bear UL's Mark are considered Certified.

BXUV - Fire Resistance Ratings - ANSI/UL 263 Certified for United States

BXUV7 - Fire Resistance Ratings - CAN/ULC-S101 Certified for Canada

See General Information for Fire-resistance Ratings - ANSI/UL 263 Certified for United States Design Criteria and Allowable Variances

See General Information for Fire Resistance Ratings - CAN/ULC-S101 Certified for Canada Design Criteria and Allowable Variances

## Design No. U528

March 12, 2020

**Bearing Wall Rating — 1 Hr**

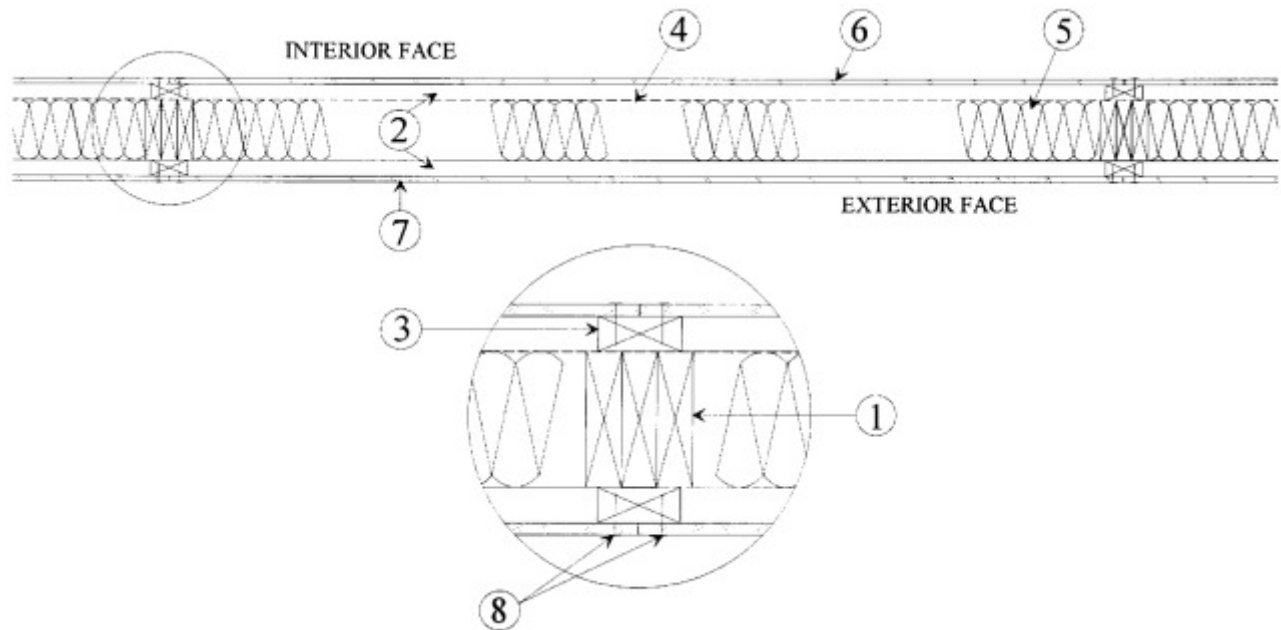
**Finish Rating — 18 Min**

**(Exposed to Fire on Interior Face Only)**

**Load Restricted to 92% of Allowable Column Design Load.**

**This design was evaluated using a load design method other than the Limit States Design Method (e.g., Working Stress Design Method). For jurisdictions employing the Limit States Design Method, such as Canada, a load restriction factor shall be used — See Guide BXUV or BXUV7**

**\* Indicates such products shall bear the UL or cUL Certification Mark for jurisdictions employing the UL or cUL Certification (such as Canada), respectively.**



1. **Wood Column** — Three lengths of nom 2 by 6 in. lumber fastened together with two 4-3/8 in. long nails spaced vertically 8 in. OC. Wood columns spaced a maximum 7 ft., 6 in. OC.

2. **Horizontal Nailer** — Nom 2 by 4 in. lumber spaced vertically 24 in. OC and attached to wood columns with two 16d ring shank nails spaced 24 in. OC.

3. **Blocking** — Nom 2 by 4 in. lumber installed between horizontal nailers and fastened to wood column member with 16d ring shank nails.

4. **Vapor Barrier** — (Optional) — Polyethylene vapor barrier, 4 mil thickness.

5. **Insulation** — Fiberglass insulation having a nom thickness of 6 in. and a nom density of 0.5 pcf.

5A. **Fiber, Sprayed\*** — As an alternate to Insulation (Item 5) — Spray applied cellulose material. The fiber is applied with water to completely fill the enclosed cavity in accordance with the application instructions supplied with the product with a nominal dry density of 2.7 lb/ft<sup>3</sup>. Alternate Application Method: The fiber is applied without water or adhesive at a nominal dry density of 3.5 lb/ft<sup>3</sup>, in accordance with the application instructions supplied with the product.

**U S GREENFIBER L L C** — INS735, INS745 and INS750LD for use with wet or dry application. INS515LD, INS541LD, INS735, INS765LD, and INS773LD are to be used for dry application only.

5B. **Fiber, Sprayed\*** — As an alternate to Batts and Blankets (Item 5) - Spray applied cellulose fiber. The fiber is applied with water to completely fill the enclosed cavity in accordance with the application instructions supplied with the product. The minimum dry density shall be 4.30 lbs/ft<sup>3</sup>.

**INTERNATIONAL CELLULOSE CORP** — Celbar-RL

6. **Gypsum Board\*** — (Interior face) — 5/8 in. thick, 4 ft wide, applied horizontally. Wallboard attached to horizontal nailers and blocking with 6d nails spaced 7 in. OC. Wallboard joints exposed or covered with tape and joint compound. Nailheads exposed or covered with joint compound.

**AMERICAN GYPSUM CO** — Type AG-C.

**CERTAINTED GYPSUM INC** — Type C

**CGC INC** — Types C, IP-X2.

**CERTAINEED GYPSUM INC** — Type LGFC-C/A.

**GEORGIA-PACIFIC GYPSUM L L C** — Types 5, DAPC, TG-C.

**NATIONAL GYPSUM CO** — Types eXP-C, FSK-C, FSW-C, FSW-G.

**THAI GYPSUM PRODUCTS PCL** — Type C

**UNITED STATES GYPSUM CO** — Types C, IP-X2, ULIX.

**USG BORAL DRYWALL SFZ LLC** — Type C

**USG MEXICO S A DE C V** — Types C, IP-X2.

6A. **Gypsum Board\*** — (As an alternate to Item 6) — 5/8 in. thick gypsum panels, with beveled, square, or tapered edges, applied either horizontally or vertically. Gypsum panels fastened to framing with 1-1/4 in. long Type W coarse thread gypsum panel steel screws spaced a maximum 10 in. OC with the last two screws 4 and 1 in. from the edges of the board. When used in widths other than 48 in., gypsum panels are to be installed horizontally.

**CERTAINEED GYPSUM INC** — Type LGFC6A (finish rating 21 min), Type LGFC2A, Type LGFC-C/A, Type LGFC-WD, Type LGLLX

7. **Gypsum Board\*** — (Exterior face ONLY) — Any 5/8 in. thick UL Classified Gypsum Board that is eligible for use in Design Nos. L501, G512 or U305. Nom. 5/8 in. thick, 4 ft wide, applied horizontally. Gypsum board attached to horizontal nailers and blocking with 6d nails spaced 7 in. OC. Wallboard joints exposed or covered with tape and joint compound. Nailheads exposed or covered with joint compound.

**CABOT MANUFACTURING ULC** ([View Classification](#)) — CKNX.R25370

**AMERICAN GYPSUM CO** ([View Classification](#)) — CKNX.R14196

**BEIJING NEW BUILDING MATERIALS PUBLIC LTD CO** ([View Classification](#)) — CKNX.R19374

**CERTAINEED GYPSUM INC** ([View Classification](#)) — CKNX.R3660

**CGC INC** ([View Classification](#)) — CKNX.R19751

**CERTAINEED GYPSUM INC** ([View Classification](#)) — CKNX.R18482

**GEORGIA-PACIFIC GYPSUM L L C** ([View Classification](#)) — CKNX.R2717

**LOADMASTER SYSTEMS INC** ([View Classification](#)) — CKNX.R11809

**NATIONAL GYPSUM CO** ([View Classification](#)) — CKNX.R3501

**PABCO BUILDING PRODUCTS L L C, DBA PABCO GYPSUM** ([View Classification](#)) — CKNX.R7094

**PANEL REY S A** ([View Classification](#)) — CKNX.R21796

**SIAM GYPSUM INDUSTRY (SARABURI) CO LTD** ([View Classification](#)) — CKNX.R19262

**THAI GYPSUM PRODUCTS PCL** ([View Classification](#)) — CKNX.R27517

**UNITED STATES GYPSUM CO** ([View Classification](#)) — CKNX.R1319

**USG BORAL DRYWALL SFZ LLC** ([View Classification](#)) — CKNX.R38438

**USG MEXICO S A DE C V** ([View Classification](#)) — CKNX.R16089

**7A. Gypsum Board\*** — (As an alternate to Item 7) — 5/8 in. thick gypsum panels, with beveled, square, or tapered edges, applied either horizontally or vertically. Gypsum panels fastened to framing with 1-1/4 in. long Type W coarse thread gypsum panel steel screws spaced a maximum 10 in. OC with the last two screws 4 and 1 in. from the edges of the board. When used in widths other than 48 in., gypsum panels are to be installed horizontally.

**CERTAINTED GYPSUM INC** — Type LGFC6A (finish rating 21 min), Type LGFC2A, Type LGFC-C/A, Type LGFC-WD, Type LGLLX

**8. Nails** — 6d cement coated nails, 1-7/8 in. long, 0.0915 in. shank diam, 1/4 in. diam heads.

**\* Indicates such products shall bear the UL or cUL Certification Mark for jurisdictions employing the UL or cUL Certification (such as Canada), respectively.**

Last Updated on 2020-03-12

---

La presencia del nombre de una empresa o producto en esta base de datos no garantiza por sí misma que los productos así identificados hayan sido fabricados bajo el servicio de seguimiento de UL. Solo aquellos productos que lleven la marca UL deben considerarse como certificados y garantizados bajo el servicio de seguimiento de UL. Busque siempre la marca en el producto.

UL permite la reproducción del material contenido en el directorio de certificación en línea sujeta a las siguientes condiciones: 1. La información de la guía, las ensamblajes, las construcciones, los diseños, los sistemas y/o certificaciones (archivos) deben presentarse en su totalidad y de forma no engañosa, sin ninguna manipulación en los datos (o dibujos). 2. Debe aparecer la declaración "Reimpreso desde el directorio de certificaciones en línea con permiso de UL" junto al material extraído. Además, el material reimpreso debe incluir una nota de derechos de autor en el siguiente formato: "© 2021 UL LLC"