

BXUV.U617 - Fire-resistance Ratings - ANSI/UL 263

**Drywall Solutions**

Design/System/Construction/Assembly Usage Disclaimer

- Authorities Having Jurisdiction should be consulted in all cases as to the particular requirements covering the installation and use of UL Certified products, equipment, system, devices, and materials.
- Authorities Having Jurisdiction should be consulted before construction.
- Fire resistance assemblies and products are developed by the design submitter and have been investigated by UL for compliance with applicable requirements. The published information cannot always address every construction nuance encountered in the field.
- When field issues arise, it is recommended the first contact for assistance be the technical service staff provided by the product manufacturer noted for the design. Users of fire resistance assemblies are advised to consult the general Guide Information for each product category and each group of assemblies. The Guide Information includes specifics concerning alternate materials and alternate methods of construction.
- Only products which bear UL's Mark are considered Certified.

BXUV - Fire Resistance Ratings - ANSI/UL 263 Certified for United States

BXUV7 - Fire Resistance Ratings - CAN/ULC-S101 Certified for Canada

See General Information for Fire-resistance Ratings - ANSI/UL 263 Certified for United States
Design Criteria and Allowable Variances

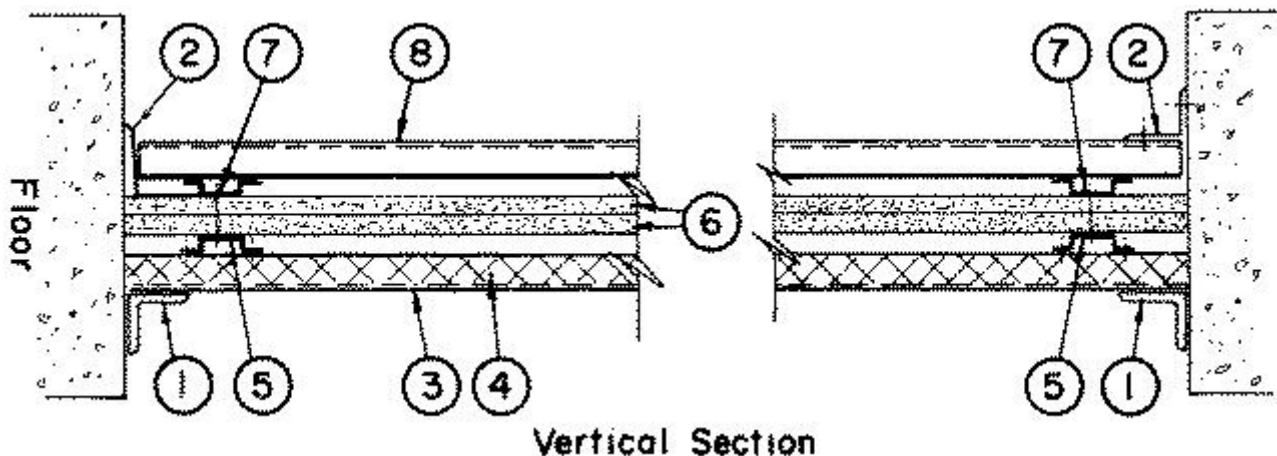
See General Information for Fire Resistance Ratings - CAN/ULC-S101 Certified for Canada
Design Criteria and Allowable Variances

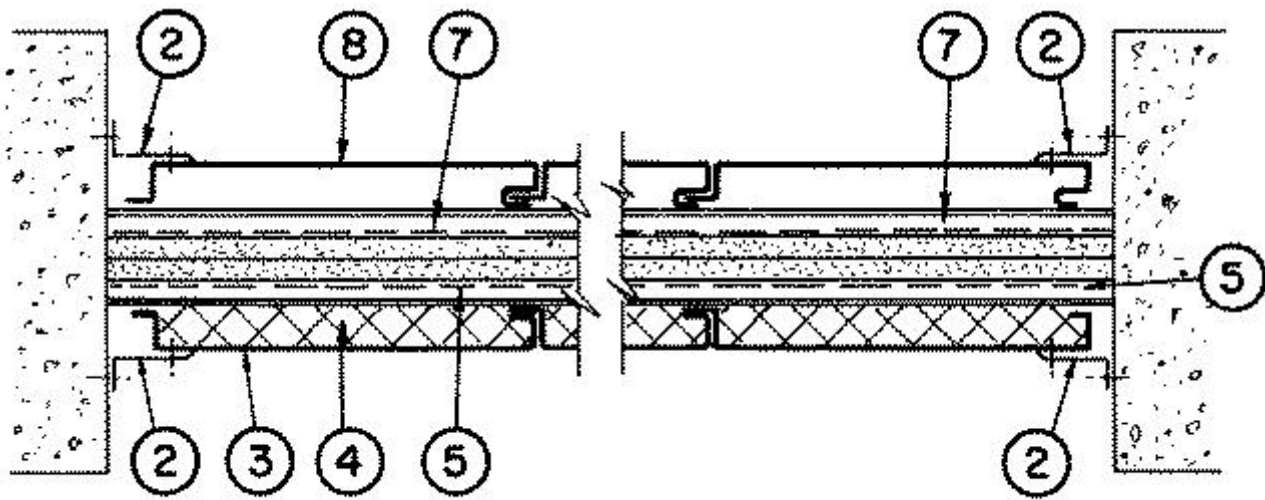
Design No. U617

October 08, 2020

Nonbearing Wall Rating — 1 HR.

*** Indicates such products shall bear the UL or cUL Certification Mark for jurisdictions employing the UL or cUL Certification (such as Canada), respectively.**





Horizontal Section

1. Supporting Angles — 3 by 3 by 1/4 in. steel, attached to masonry with 1-1/2 in.-14 hex head, self-tapping steel screws with steel and neoprene washers and 1-1/2 in. long split steel inserts spaced 24 in. OC.

2. Flashing Angles — 2 by 2-1/4 in., 16 to 20 MSG metal coated steel, 2 in. leg attached to masonry or wall with 1-1/2 in.-14 hex head, self-tapping. Steel screws with steel and neoprene washers with 1-1/2 in. long split steel inserts spaced 18 in. OC.

3. Wall and Partition Facings and Accessories* — Steel Liners — Min 20 MSG. 24 in. wide steel liners forming the interior side of the wall attached to top and bottom supporting angles with 3/4 in. long, power driven steel fasteners with 0.466 in. diam washer head and 0.152 in. diam shaft or 3/4 in.-14 hex head self-tapping steel screws located at the center and 1 in. from the edge of each panel. For panels exceeding 24 in. in width, an 18 MSG sub-girt support continuous Z bar or 4 in. long Z clip, 1-1/2 in. deep with 1 in. flanges, to be used to attach face of liner to sub-girt and maintain spacing equal to or less than 24 in. OC. Liners attached to Z supports with 3/16 in. diameter steel rivet or #14 x 3/4 in. steel screw. The end liners attached to the side flashing angles with 3/4 in.-14 hex head self-tapping screws spaced 12 in. OC.

CENTRIA, A DIVISION OF NCI GROUP, INC — Type "L-10," "L-10P," "L-11," "L-11P," "L-20," "L-20P," "L-21," "L-21P," "L-36," "L-36P," "L-41," "L-41P," (min 20 ga), C-Panel, Channelwall I, CFP III, K-Panel, L1 Liner, L1-2 Liner, L2 Liner, L2-2 Liner, Trim-wall, L2-3 Liner.

4. Batts and Blankets* — 1-1/2 in. thick mineral wool or glass fiber batts. Installed in liner cavity with horizontal joints in adjacent cavities staggered.

CERTAINTED CORP

JOHNS MANVILLE

KNAUF INSULATION LLC

MANSON INSULATION INC

ROCKWOOL — Type AFB, min. density 1.69 pcf / 27.0 kg/m³

THERMAFIBER INC — Type SAFB, SAFB FF

5. Sub-girts — Hat shaped, 1/2 in. deep by 2-1/2 in. wide with 11/16 in. legs, No. 16 gauge metal coated steel; or 1-3/16 in. deep, 1-1/16 in. flanges Z angles fabricated from No. 14 ga. galvanized steel; attached to lip of liners along both legs or through the Z angle flange in contact with the liner with 1 in.-14 hex washer head self-tapping, self-drilling steel screws. Sub-girts spaced vertically not more than 48 in. OC with top and bottom sub-girts located not more than 3 in. from supporting angles.

6. Gypsum Board* — 5/8 in. thick by 48 in. wide sheets, two layers applied vertically, vertical and horizontal joints between adjacent layers staggered. First and second layers attached to sub-girts with 1-5/8 in.-12 Phillips head steel screws, located

alternately 12 in. from the vertical edges in each sheet for the first layer and 6 in. from the vertical edge in each sheet for the second layer.

AMERICAN GYPSUM CO — Type AGX-1, M-Glass, AG-C, LightRoc.

BEIJING NEW BUILDING MATERIALS PUBLIC LTD CO — Type DBX-1.

CABOT MANUFACTURING ULC — Type X, 5/8 Type X, Type Blueglass Exterior Sheathing.

CGC INC — Types IP-X1, SCX, SHX, ULX, USGX, WRX.

CERTAINTED GYPSUM INC — Types EGRG, GlasRoc, GlasRoc-2, SilentFX, 5/8" Easi-Lite Type X.

CERTAINTED GYPSUM INC — Types LGFC2A, LGFC6A, LGFC-C/A, LGFC-WD, LGLLX, CLLX.

GEORGIA-PACIFIC GYPSUM L L C — Types 5, 6, 9, C, DAP, DD, DA, DAPC, DGG, DS, GPFS6, LS, TG-C, Type X, Veneer Plaster Base-Type X, Water Rated-Type X, Sheathing Type-X, Soffit-Type X, GreenGlass Type X, Type X ComfortGuard Sound Deadening Gypsum Board, Type LWX, Veneer Plaster Base-Type LWX, Water Rated-Type LWX, Sheathing Type-LWX, Soffit-Type LWX, Type DGLW, Water Rated-Type DGLW, Sheathing Type- DGLW, Soffit-Type DGLW, Type LW2X, Veneer Plaster Base - Type LW2X, Water Rated - Type LW2X, Sheathing - Type LW2X, Soffit - Type LW2X, Type DGL2W, Water Rated - Type DGL2W, Sheathing - Type DGL2W.

NATIONAL GYPSUM CO — Types FSK, FSMR-C, FSW, FSW-3, FSW-6, FSW-8, FSL, RSX.

NATIONAL GYPSUM CO — Riyadh, Saudi Arabia — Type FR, or WR.

PABCO BUILDING PRODUCTS L L C, DBA PABCO GYPSUM — Types C, PG-9, PG-11, PGS-WRS, PGI

PANEL REY S A — Type PRX2

SIAM GYPSUM INDUSTRY (SARABURI) CO LTD — Type EX-1

THAI GYPSUM PRODUCTS PCL — Type X

UNITED STATES GYPSUM CO — Types FRX-G, IP-X1, SCX, SHX, ULX, WRX, USGX, ULIX, ULIX

USG BORAL DRYWALL SFZ LLC — Type SCX, USGX

USG MEXICO S A DE C V — Types IP-X1, SCX, SHX, ULX, USGX or WRX.

6A. Gypsum Board* — (As an alternate to Item 6) — Nom 3/4 in. thick, 48 in. wide, installed as described in Item 6 with length of fasteners for second layer increased to 2-1/4 in.

CGC INC — Type AR.

UNITED STATES GYPSUM CO — Type AR.

USG MEXICO S A DE C V — Type AR.

6B. Gypsum Board* — As an alternate to Items 6 and 6A) — Nominal 5/8 in. thick, 4 ft wide panels, secured as described in Item 6.

PABCO BUILDING PRODUCTS L L C, DBA PABCO GYPSUM — Type QuietRock ES

6C. Wall and Partition Facings and Accessories* — (As an alternate to Items 6 through 6B) — Composite Gypsum Panel — Nominal 5/8 in. thick, 4 ft wide panels, secured as described in Item 6.

PABCO BUILDING PRODUCTS L L C, DBA PABCO GYPSUM — Type QuietRock 527

7. Sub-girts — Hat shaped, 7/16 in. deep by 2-3/4 in. wide with 1/2 in. legs, 16 or 14 MSG metal coated steel; or 1-3/16 in. deep, 1-1/16 in. flanges Z angles fabricated from No. 14 gauge galvanized steel placed over wallboard with one lip located in line with the sub-girts on the opposite side and attached through the wallboard to the first set of sub-girts with 2-3/8 in.-14 hex head self-tapping screws spaced horizontally 24 in. OC or alternately 2-3/8 in.-12-14 self-drilling, self-tapping screws spaced horizontally 24 in. OC.

8. Wall and Partition Facings and Accessories* — Facing Units — Min 20 MSG. Steel facing units of various shapes, attached to sub-girts with U-shaped No. 18 gauge coated spring steel clips hooked over the lip of the facing unit and screw-attached to the sub-girt with 3/4 in.-14 hex head self-tapping steel screws.

CENTRIA, A DIVISION OF NCI GROUP, INC — Type IW10A, IW11A, IW13A, IW14A, IW18A, IW20A, IW21A, IW30A, IW31A, IW40A, IW41A, Sections 3, 12 or 30, C15-40, HR5-36, BR5-36, MR3-36, LR4-36, TR4-36, Corrugated, Sturdi-Rib, Huski-Rib, Box-Rib, Magna-Rib, SR3-36, or L2-3 Liner.

8A. Protected Metals* — Protected metal facing units of various shapes, supplied in 29 to 34 in. widths, attached to sub-girts with 3/4 in.-12 hex head self-tapping steel screws spaced horizontally 14 in. OC. Sheets secured along joints with 3/4 in.-12 steel screws spaced vertically 18 in. OC.

CENTRIA, A DIVISION OF NCI GROUP, INC — Sheet-steel facing units of various shapes with asphalt impregnated felt applied with metallic adhesive, with asphalt and resin base coatings.

8B. Facing Units-Building Units — (Not shown) — 2 in. thick, 24, or 30 or 36 in. wide insulated steel panels forming the exterior of the wall. Attached through spacer clip at lip of units to top and bottom or side exterior support angles with No. 14 by 1-3/4 in. long hex head self-tapping steel screws. Sub-girts (Items 5 and 7) maybe spaced horizontally, not more than 48 in. OC.

CENTRIA, A DIVISION OF NCI GROUP, INC — Types Formawall Dimension Series, Formawall Dimension Series Graphix, MetalWrap, Versapanel 1.75", 2.5", 4"; Versawall 2", 2.75", 4"; MetalWrap Long Span 2", 2.75" & 4".

8C. Wall and Partition Facings and Accessories* — Steel Face Panels — As an alternate to Items 8, 8A and 8B, No. 20 MSG min, steel facing units. (For rating applicable when exposed to liner side only, No. 24 MSG min.) Fastened to sub-girts with No. 14 by 3/4 in. long, hex-head, self-tapping, self-drilling screws.

AEP SPAN, DIV OF ASC PROFILES — Type HR-36.

*** Indicates such products shall bear the UL or cUL Certification Mark for jurisdictions employing the UL or cUL Certification (such as Canada), respectively.**

Last Updated on 2020-10-08

La presencia del nombre de una empresa o producto en esta base de datos no garantiza por sí misma que los productos así identificados hayan sido fabricados bajo el servicio de seguimiento de UL. Solo aquellos productos que lleven la marca UL deben considerarse como certificados y garantizados bajo el servicio de seguimiento de UL. Busque siempre la marca en el producto.

UL permite la reproducción del material contenido en el directorio de certificación en línea sujeta a las siguientes condiciones: 1. La información de la guía, las ensamblajes, las construcciones, los diseños, los sistemas y/o certificaciones (archivos) deben presentarse en su totalidad y de forma no engañosa, sin ninguna manipulación en los datos (o dibujos). 2. Debe aparecer la declaración "Reimpreso desde el directorio de certificaciones en línea con permiso de UL" junto al material extraído. Además, el material reimpreso debe incluir una nota de derechos de autor en el siguiente formato: "© 2021 UL LLC"