

# BXUV.V332 - Fire-resistance Ratings - ANSI/UL 263



## Design/System/Construction/Assembly Usage Disclaimer

- Authorities Having Jurisdiction should be consulted in all cases as to the particular requirements covering the installation and use of UL Certified products, equipment, system, devices, and materials.
- Authorities Having Jurisdiction should be consulted before construction.
- Fire resistance assemblies and products are developed by the design submitter and have been investigated by UL for compliance with applicable requirements. The published information cannot always address every construction nuance encountered in the field.
- When field issues arise, it is recommended the first contact for assistance be the technical service staff provided by the product manufacturer noted for the design. Users of fire resistance assemblies are advised to consult the general Guide Information for each product category and each group of assemblies. The Guide Information includes specifics concerning alternate materials and alternate methods of construction.
- Only products which bear UL's Mark are considered Certified.

BXUV - Fire Resistance Ratings - ANSI/UL 263 Certified for United States

BXUV7 - Fire Resistance Ratings - CAN/ULC-S101 Certified for Canada

[See General Information for Fire-resistance Ratings - ANSI/UL 263 Certified for United States Design Criteria and Allowable Variances](#)

[See General Information for Fire Resistance Ratings - CAN/ULC-S101 Certified for Canada Design Criteria and Allowable Variances](#)

## **Design No. V332**

March 13, 2020

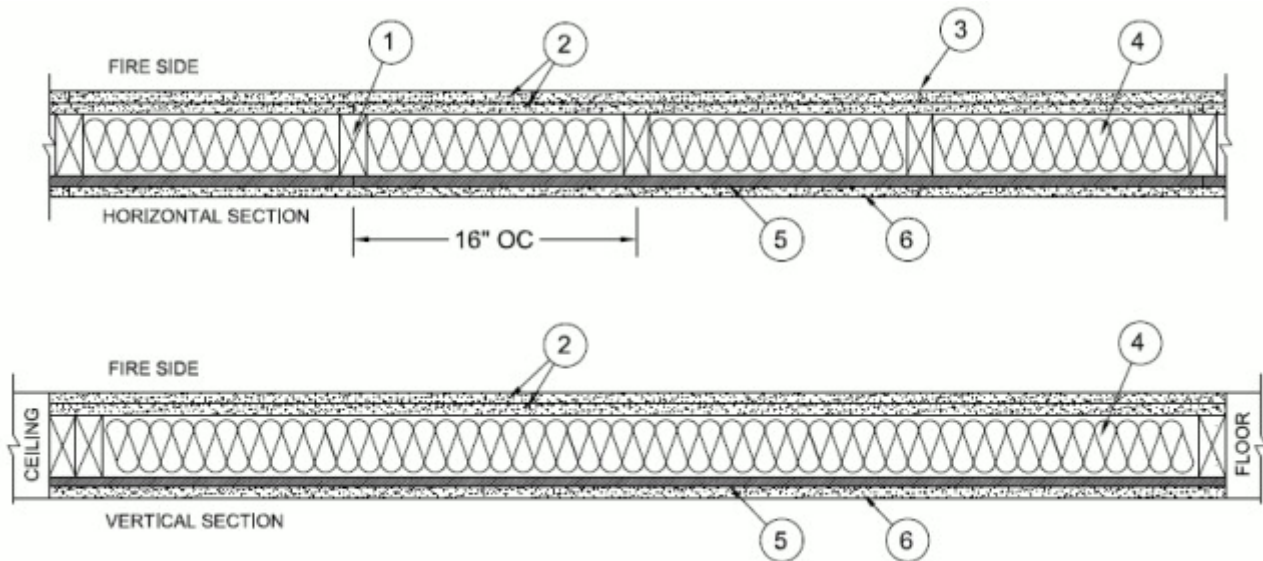
**Bearing Wall Rating — 2 Hr**

**(EXPOSED TO FIRE ON INTERIOR FACE ONLY)**

**Finish Rating — 42 min**

**Loaded Per 2012 NDS Supplement, ASD Method, Wall Braced Mid-Height**

**\* Indicates such products shall bear the UL or cUL Certification Mark for jurisdictions employing the UL or cUL Certification (such as Canada), respectively.**



**1. Framing Members\*** — Pressure-treated, fire-retardant Wood Studs - nom. 2 by 4 in., spaced 16 in. OC in. effectively fire stopped. As an option, nominal 2 by 6 in., spaced 24 in. OC effectively fire-stopped.

**HOOVER TREATED WOOD PRODUCTS INC** — Pyro-Guard treated lumber

**2. Gypsum Board\*** — Nom 5/8 in. thick, 4 ft. wide, two layers applied vertically. Base layer nailed to wood studs and bearing plates 6 in. OC. with 6d cement coated nails, 1-7/8 in. long, 0.0915 in. shank diam. and 1/4 in. diam. head. The face layer, with joints staggered from base layer, nailed to the studs and bearing plates over the base layer, 8 in. OC with 8d cement coated nails, 2-3/8 in. long, 0.113 in. shank diam. 9/32 in. diam. head.

**AMERICAN GYPSUM CO** ([View Classification](#)) — Types AGX-1, AG-C, LightRoc

**BEIJING NEW BUILDING MATERIALS PUBLIC LTD CO** ([View Classification](#)) — Type DBX-1

**CABOT MANUFACTURING ULC** ([View Classification](#)) — Type X, Moisture Resistant Type X, Gypsum Sheathing Type X, Mold & Mildew Resistant Type X, Mold & Mildew Resistant AR Type X, Type Blueglass Exterior Sheathing

**CERTAINTED GYPSUM INC** ([View Classification](#)) — Type X, Type X-1, Easi-Lite Type X-2, Type EGRG, GlasRoc, GlasRoc-2, SilentFX

**CGC INC** ([View Classification](#)) — Type AR, Type IP-X1, Type IP-X2, Type IP-AR, Type IPC-AR, Type SCX, Type SHX, Type WRX, Type C, Type ULIX

**CERTAINTED GYPSUM INC** ([View Classification](#)) — Type LGFC-C/A, Type LGFC2A, Type LGFC-WD

**GEORGIA-PACIFIC GYPSUM L L C** ([View Classification](#)) — Types GPFS1, Type GPFS2, Type GPFS6, Type DA, Type DAPC, Type DGG, Type DD, Type DS, Type DAP, Type 5, Type 6

**NATIONAL GYPSUM CO** ([View Classification](#)) — Type FSW, FSK, FSMR-C, FSL, FSLX, FSK-G, Type FSW-G, Type FSW-5, Type FSW-6, Type FSK-C, Type FSW-C, eXP-C

**PABCO BUILDING PRODUCTS L L C, DBA PABCO GYPSUM** ([View Classification](#)) — Type PG-2, Type PG-3W, Type PG-3WS, Type PG-4, Type PG-5W, Type PG-5WS, Type PG-6, Type PG-WRS, Type QuietRock ES, Type C

**PANEL REY S A** ([View Classification](#)) — Type PRX, Type RHX, Type MDX, Type, ETX, Type GREX, Type GRIX

**SIAM GYPSUM INDUSTRY (SARABURI) CO LTD** ([View Classification](#)) — Type EX-1

**THAI GYPSUM PRODUCTS PCL** ([View Classification](#)) — Type X, Type C

**UNITED STATES GYPSUM CO** ([View Classification](#)) — Type AR, Type IP-X1, Type IP-X2, Type IP-AR, Type IPC-AR, Type SCX, Type SGX, Type SHX, Type WRX, Type C, Type ULIX

**USG BORAL DRYWALL SFZ LLC** — Types C, SCX, SGX

**USG MEXICO S A DE C V** ([View Classification](#)) — Type AR, Type IP-X1, Type IP-X2, Type IP-AR, Type IPC-AR, Type SCX, Type SHX, Type WRX, Type C

**3. Joints and Nailheads** — Gypsum board joints covered with tape and joint compound. Nail heads covered with joint compound.

**4. Batts and Blankets\*** — Faced or unfaced mineral fiber insulation, 3-1/2 in. thick, nom 3.0 pcf, pressure fit in the wall cavity between stud, plates, and cross bracing. Insulation may be applied in multiple layers to achieve final thickness.

See **Batts and Blankets\*** (BZJZ) category for names of Classified manufacturers.

**5. Building Units\*** — Fire treated or coated plywood panels installed vertically nailed to the wood framing with 1-7/8 in. long, 6d nails, spaced 6 in. OC. on the perimeter and 12 in. OC. in the field. Vertical and horizontal joints are backed by framing. Panels provided in nominal size of 48 in. wide by 96 in. long.

**LOUISIANA-PACIFIC CORP** — 7/16 in. thick Type Blazeguard 2-Side

**HOOVER TREATED WOOD PRODUCTS INC** — 15/32 in. thick Pyro-Guard treated plywood

**LOUISIANA-PACIFIC CORP** — 7/16 in. thick Type LP FlameBlock 2-Side

**5A. Foamed Plastic\*** — (Optional — for use over Building Units, Item 5) — Foamed plastic boards, faced or unfaced, may or may not be bonded to fiberboard, plywood or OSB and placed between building units (Item 5) and exterior facings (Item 6).

**HUNTER PANELS, A DIVISION OF CARLISLE CONSTRUCTION MATERIALS, LLC** — "Xci Class A", "Xci 286", "Xci Foil (Class A)", "Xci CG", "Xci Foil", "Xci CG NH", "Xci Foil NH"

**RMAX, A BUSINESS UNIT OF SIKA CORPORATION** — Types "TSX-8500", "ECOMAXci FR", "TSX-8510", "ECOMAX xi FR White", "ECOMAXci", "ECOMAXci FR Air Barrier", "Thermasheath-XP", "Thermasheath", "Durasheath", "Thermasheath-3", "Durasheath-3".

**5B. Building Units\*** — (Optional — for use over Building Units, Item 5) — Polyisocyanurate composite foamed plastic insulation boards to be placed between building units (Item 5) and exterior facings (Item 6). Attached to studs with min. 8d nails or min. 2-1/2 in. long Type W screws.

**HUNTER PANELS, A DIVISION OF CARLISLE CONSTRUCTION MATERIALS, LLC** — "Xci NB", "Xci Ply"

**RMAX, A BUSINESS UNIT OF SIKA CORPORATION** — Types "Thermasheath-SI", "ECOBASEci", "ECOMAXci FR Ply", "ThermaBase-CI", "ECOMAXci Ply" polyisocyanurate composite foamed plastic insulation boards

**5C. Foamed Plastic\*** — (Optional - for use over Building Units, Item 5) — Expanded polystyrene insulation installed to a maximum nominal density of 2.0 lb/ft<sup>2</sup> to be placed between Building Units (Item 5) and Exterior Facings (Item 6).

**BASF CORP STYRENIC FOAMS DIV** — Type Neopor "F" Series

6. **Exterior Facings** — Any exterior facing, as authorized by the Authority Having Jurisdiction and installed in accordance with the manufacturer's installation instructions. Exterior facings may include, but are not limited to:

6A. **Molded Plastic\*** — Solid vinyl siding mechanically secured to framing members in accordance with manufacturer's recommended installation details.

6B. **Brick** — Brick veneer, meeting the requirements of local code agencies. Brick veneer attached to the studs with corrugated metal wall ties attached to each stud with 8d cement coated nails, every sixth course of bricks.

6C. **Particle Board Siding\*** — Oriented strand board, wafer board, or hard board exterior building sidings including patterned panels.

6D. **T1-11 Plywood** — American Plywood Association rated siding series 303 including textures, rough sawn, MDO, brushed, channel grooved, and lap siding.

6E. **Cementitious Stucco** — Portland cement or synthetic stucco systems with self-furring metal lath or adhesive base coat. Thickness from 3/8 in. to 3/4 in. depending on system.

**\* Indicates such products shall bear the UL or cUL Certification Mark for jurisdictions employing the UL or cUL Certification (such as Canada), respectively.**

Last Updated on 2020-03-13

---

La presencia del nombre de una empresa o producto en esta base de datos no garantiza por sí misma que los productos así identificados hayan sido fabricados bajo el servicio de seguimiento de UL. Solo aquellos productos que lleven la marca UL deben considerarse como certificados y garantizados bajo el servicio de seguimiento de UL. Busque siempre la marca en el producto.

UL permite la reproducción del material contenido en el directorio de certificación en línea sujeta a las siguientes condiciones: 1. La información de la guía, las ensamblajes, las construcciones, los diseños, los sistemas y/o certificaciones (archivos) deben presentarse en su totalidad y de forma no engañosa, sin ninguna manipulación en los datos (o dibujos). 2. Debe aparecer la declaración "Reimpreso desde el directorio de certificaciones en línea con permiso de UL" junto al material extraído. Además, el material reimpreso debe incluir una nota de derechos de autor en el siguiente formato: "© 2021 UL LLC"