

# BXUV.V419 - Fire-resistance Ratings - ANSI/UL 263



## Design/System/Construction/Assembly Usage Disclaimer

- Authorities Having Jurisdiction should be consulted in all cases as to the particular requirements covering the installation and use of UL Certified products, equipment, system, devices, and materials.
- Authorities Having Jurisdiction should be consulted before construction.
- Fire resistance assemblies and products are developed by the design submitter and have been investigated by UL for compliance with applicable requirements. The published information cannot always address every construction nuance encountered in the field.
- When field issues arise, it is recommended the first contact for assistance be the technical service staff provided by the product manufacturer noted for the design. Users of fire resistance assemblies are advised to consult the general Guide Information for each product category and each group of assemblies. The Guide Information includes specifics concerning alternate materials and alternate methods of construction.
- Only products which bear UL's Mark are considered Certified.

BXUV - Fire Resistance Ratings - ANSI/UL 263 Certified for United States

BXUV7 - Fire Resistance Ratings - CAN/ULC-S101 Certified for Canada

[See General Information for Fire-resistance Ratings - ANSI/UL 263 Certified for United States Design Criteria and Allowable Variances](#)

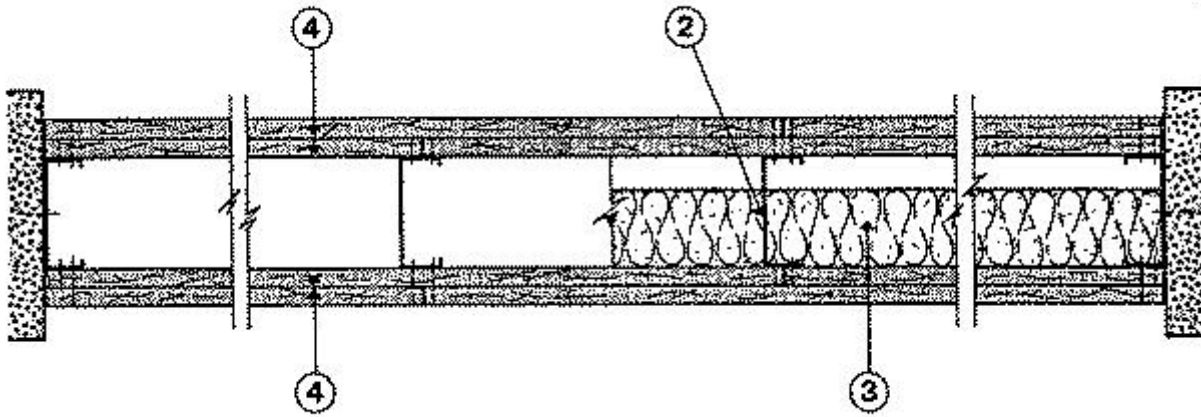
[See General Information for Fire Resistance Ratings - CAN/ULC-S101 Certified for Canada Design Criteria and Allowable Variances](#)

## Design No. V419

January 05, 2021

### Nonbearing Wall Rating — 2 Hr

**\* Indicates such products shall bear the UL or cUL Certification Mark for jurisdictions employing the UL or cUL Certification (such as Canada), respectively.**



**1. Floor and Ceiling Runners** — (Not Shown) — 25 MSG (min) galv steel 1 in. high, return legs 2-1/2 in. wide (min), attached to floor and ceiling with fasteners 24 in. OC.

**1A. Framing Members\* — Floor and Ceiling Runner** — Not Shown — In lieu of Item 1 — For use with Item 2A, proprietary channel shaped runners, 1-1/4 in. deep by min 2-1/2 in. wide fabricated from min 0.018 in. thick galv steel, attached to floor and ceiling with fasteners spaced 24 in. OC max.

**CALIFORNIA EXPANDED METAL PRODUCTS CO** — Viper20™ Track

**MARINO/WARE, DIV OF WARE INDUSTRIES INC** — Viper20™ Track

**FUSION BUILDING PRODUCTS** — Viper20™ Track

**IMPERIAL MANUFACTURING GROUP INC** — Viper20™ Track

**1B. Framing Members\* — Floor and Ceiling Runners** — Not Shown — In lieu of Item 1 — For use with Item 2B, channel shaped runners, 1-1/4 in. deep by min 2-1/2 in. wide fabricated from min 0.018 in. thick galv steel, attached to floor and ceiling with fasteners spaced 24 in. OC max.

**CLARKDIETRICH BUILDING SYSTEMS** — CD ProTRAK

**DMFCWBS L L C** — ProTRAK

**MBA METAL FRAMING** — ProTRAK

**RAM SALES L L C** — Ram ProTRAK

**STEEL STRUCTURAL PRODUCTS L L C** — Tri-S ProTRAK

**1C. Framing Members\* — Floor and Ceiling Runner** — Not Shown — In lieu of Item 1 — For use with Item 2C, proprietary channel shaped runners, 1-1/4 in. deep by min 2-1/2 in. wide fabricated from min 0.018 in. thick galv steel, attached to floor and ceiling with fasteners spaced 24 in. OC max.

**MARINO/WARE, DIV OF WARE INDUSTRIES INC** — Viper20™ Track

**1D. Framing Members\* – Floor and Ceiling Runners – Not Shown – In lieu of Item 1 – For use with Item 2D, channel shaped runners, 1-1/4 in. deep by min 2-1/2 in. wide fabricated from min 0.018 in. thick galv steel, attached to floor and ceiling with fasteners spaced 24 in. OC max.**

**TELLING INDUSTRIES L L C – TRUE-TRACK™**

**1E. Framing Members\* – Floor and Ceiling Runners – Not Shown – In lieu of Item 1 – For use with Item 2F, channel shaped runners, 1-1/4 in. deep by min 3-1/2 in. wide fabricated from min 0.018 in. thick galv steel, attached to floor and ceiling with fasteners spaced 24 in. OC max.**

**RESCUE METAL FRAMING, L L C – AlphaTRAK**

**2. Steel Studs – 2-1/2 in. wide (min), 1-1/4 in. legs, 3/8 in. return, formed of 25 MSG (min) galv steel max stud spacing 24 in. OC. Studs to be cut 3/4 in. less than assembly height.**

**2A. Framing Members\* – Steel Studs – Not Shown – In lieu of Item 2 – For use with Item 1A, proprietary channel shaped steel studs, 1-1/4 in. deep by min 2-1/2 in. wide fabricated from min 0.018 in. thick galv steel, spaced max 24 in. OC. Studs cut 3/4 in. less in length than assembly height.**

**CALIFORNIA EXPANDED METAL PRODUCTS CO – Viper20™**

**MARINO/WARE, DIV OF WARE INDUSTRIES INC – Viper20™**

**FUSION BUILDING PRODUCTS – Viper20™**

**IMPERIAL MANUFACTURING GROUP INC – Viper20™**

**2B. Framing Members\* – Steel Studs – Not Shown – In lieu of Item 2 – For use with Item 1B, channel shaped steel studs, 1-1/4 in. deep by min 2-1/2 in. wide fabricated from min 0.018 in. thick galv steel, spaced max 24 in. OC. Studs cut 3/4 in. less in length than assembly height.**

**CLARKDIETRICH BUILDING SYSTEMS – CD ProSTUD**

**DMFCWBS L L C – ProSTUD**

**MBA METAL FRAMING – ProSTUD**

**RAM SALES L L C – Ram ProSTUD**

**STEEL STRUCTURAL PRODUCTS L L C – Tri-S ProSTUD**

**2C. Framing Members\* – Steel Studs – Not Shown – In lieu of Item 2 – For use with Item 1C, proprietary channel shaped steel studs, 1-1/4 in. deep by min 2-1/2 in. wide fabricated from min 0.018 in. thick galv steel, spaced max 24 in. OC. Studs cut 3/4 in. less in length than assembly height.**

**MARINO/WARE, DIV OF WARE INDUSTRIES INC – Viper20™**

**2D. Framing Members\* – Steel Studs – Not Shown – In lieu of Item 2 – For use with Item 1D, channel shaped steel studs, 1-1/4 in. deep by min 2-1/2 in. wide fabricated from min 0.018 in. thick galv steel, spaced max 24 in. OC. Studs cut**

3/4 in. less in length than assembly height.

**TELLING INDUSTRIES L L C** – TRUE-STUD™

**2E. Framing Members\* – Steel Studs** – As an alternate to Item 2 – For use with Item 1A (3-5/8 in. wide track), channel shaped studs, fabricated from min 25 MSG corrosion-protected steel, 1-1/4 in. wide by 3-5/8 in. deep, spaced a max of 24 in. OC. Studs to be cut 3/8 to 3/4 in. less than assembly height.

**MARINO/WARE, DIV OF WARE INDUSTRIES INC** – StudRite™

**2F. Framing Members\* – Steel Studs** – Not Shown – In lieu of Item 2 – For use with Item 1E, channel shaped steel studs, 1-1/4 in. deep by min 3-1/2 in. wide fabricated from min 0.018 in. thick galv steel, spaced max 24 in. OC. Studs cut 3/4 in. less in length than assembly height.

**RESCUE METAL FRAMING, L L C** – AlphaSTUD

**3. Batts and Blankets\*** – Mineral wool batts partially or completely filling stud cavity.

**ROCKWOOL MALAYSIA SDN BHD** – Type Acoustical Fire Batts

**ROCK WOOL MANUFACTURING CO** – Type Delta Board.

**4. Gypsum Board\*** – 5/8 in. thick, outer layer paper, glass mat or vinyl surfaced. (Laminated System) Gypsum board applied vertically in two layers. Inner layer attached to studs with 1 in. long Type S steel screws spaced 8 in. OC along vertical edges, and 12 in. OC in the field and outer layer laminated to inner layer with joint compound, applied with a notched spreader producing continuous beads of compound about 3/8 in. in diam spaced not greater than 2 in. OC. Joints of laminated outer layer offset 12 in. from inner layer joints. Outer layer wallboard attached to floor and ceiling runner track with 1-5/8 in. long Type S steel screws spaced 12 in. OC.

Optional, (Direct Attached System), Inner layer attached to studs with 1 in. long Type S steel screws spaced 16 in. OC in the field and along the vertical edges. Outer layer attached to the studs over the inner layer with 1-5/8 in. long Type S steel screws spaced 16 in. OC in the field and along the vertical edges and 12 in. OC to the floor and ceiling runners. Joints of screw-attached outer layer offset from inner layer joints. Joints of outer layer may be taped or untaped.

Nom 3/32 in. thick gypsum veneer plaster may be applied to the entire surface of Classified veneer baseboard. Joints reinforced.

**AMERICAN GYPSUM CO** – Types AG-C, AGX-1, M-Glass, AGX-11, LightRoc.

**BEIJING NEW BUILDING MATERIALS PUBLIC LTD CO** – Type DBX-1

**CABOT MANUFACTURING ULC** – Type X, 5/8 Type X, Type Blueglass Exterior Sheathing

**CERTAINTED GYPSUM INC** – Types EGRG, GlasRoc, GlasRoc-2, SilentFX, Type X, Type X-1, 5/8" Easi-Lite Type X.

**CGC INC** – Type AR, C, IP-AR, IP-X1, IP-X2, IPC-AR, SCX, SHX, USGX, ULIX, WRC or WRX

**CERTAINTED GYPSUM INC** – Types LGFC2A, LGFC6A, LGFC-C/A, LGFC-WD, LGLLX, CLLX.

**GEORGIA-PACIFIC GYPSUM L L C** – Types 5, 6, 9, C, DAP, DD, DA, DAPC, DGG, DS, GPFS6, LS, TG-C, Type X, Veneer Plaster Base - Type X, Water Rated - Type X, Sheathing - Type X, Soffit - Type X, GreenGlass Type X, Type X ComfortGuard Sound Deadening Gypsum Board, Type LWX, Veneer Plaster Base-Type LWX, Water Rated-Type LWX, Sheathing Type-LWX, Soffit-Type LWX, Type DGLW, Water Rated-Type DGLW, Sheathing Type- DGLW, Soffit-Type DGLW, Type LW2X, Veneer Plaster Base - Type LW2X, Water Rated - Type LW2X, Sheathing - Type LW2X, Soffit - Type LW2X, Type DGL2W, Water Rated - Type DGL2W, Sheathing - Type DGL2W.

**NATIONAL GYPSUM CO** — Types eXP-C, FSK, FSK-C, FSMR-C, FSW, FSW-3, FSW, FSW-5, FSW-6, FSW-8, FSW-C, FSW-G, FSL, Type SBWB, RSX

**NATIONAL GYPSUM CO** — Riyadh, Saudi Arabia — Type FR, or WR.

**PABCO BUILDING PRODUCTS L L C, DBA PABCO GYPSUM** — Types C, PG-3, PG-5, PG-9, PG-11, PG-C, PGS-WRS, PGI

**PANEL REY S A** — Types GREX, GRIX, PRX, RHX, MDX, ETX, PRX2.

**SAINT-GOBAIN GYPROC MIDDLE EAST FZE** — Type Gyproc FireStop, Gyproc FireStop MR, Gyproc FireStop M2TECH, Gyproc FireStop ACTIV'Air, Gyproc FireStop MR ACTIV'Air, Gyproc FireStop M2TECH ACTIV'Air, Gyproc DuraLine, Gyproc DuraLine MR, Gyproc DuraLine M2TECH, Gyproc DuraLine ACTIV'Air, Gyproc DuraLine MR ACTIV'Air, Gyproc DuraLine M2TECH ACTIV'Air

**SIAM GYPSUM INDUSTRY (SARABURI) CO LTD** — Type EX-1

**THAI GYPSUM PRODUCTS PCL** — Type X

**UNITED STATES GYPSUM CO** — Type AR, C, IP-AR, IP-X1, IP-X2, IPC-AR, SCX, SHX, WRC, WRX, USGX, ULIX

**USG BORAL DRYWALL SFZ LLC** — Types C, SCX, USGX

**USG MEXICO S A DE C V** — Type AR, C, IP-AR, IP-X1, IP-X2, IPC-AR, SCX, SHX, USGX, WRC or WRX

4A. **Gypsum Board\*** — (As an alternate to Item 4) — Nom 3/4 in. thick, installed as described in Item 4 with 1-1/4 in. long Type S screws for inner layer and 2-1/4 in. long Type S screws for outer layer.

**CGC INC** — Types AR, IP-AR, ULIX.

**UNITED STATES GYPSUM CO** — Types AR, IP-AR, ULIX

**USG MEXICO S A DE C V** — Types AR, IP-AR

4B. **Gypsum Board\*** — (As alternate to Item 4) — Horizontal Application - Base layer is attached to the studs, with 1 in. long Type-S bugle head screws, spaced 16 in. OC. The face layer attached to the studs with 1-5/8 in. long Type S bugle head screws spaced 16 in. OC. Horizontal joints need not be staggered on opposite faces or backed by steel framing. Face layer horizontal joints must be staggered a minimum 12 in. from the base layer when applied horizontally. Vertical application - base layer attached to the studs with 1 in. long Type-S bugle head screws, spaced 16 in. OC. The face layer attached to the studs with 1-5/8 in. long Type-S bugle head screws, spaced 16 in. OC. Vertical joints are centered over studs and staggered between layers and on opposite sides of the wall.

**CERTAINTED GYPSUM INC** — Type X, Type C, SilentFX.

**SAINT-GOBAIN GYPROC MIDDLE EAST FZE** — Type Gyproc FireStop, Gyproc FireStop MR, Gyproc FireStop M2TECH, Gyproc FireStop ACTIV'Air, Gyproc FireStop MR ACTIV'Air, Gyproc FireStop M2TECH ACTIV'Air, Gyproc DuraLine, Gyproc DuraLine MR, Gyproc DuraLine M2TECH, Gyproc DuraLine ACTIV'Air, Gyproc DuraLine MR ACTIV'Air, Gyproc DuraLine M2TECH ACTIV'Air

**THAI GYPSUM PRODUCTS PCL** — Type X, Type C.

4C. **Gypsum Board\*** — (As an alternate to Items 4 through 4C) — Nominal 5/8 in. thick, 4 ft wide panels, applied vertically and secured as described in Item 4.

**PABCO BUILDING PRODUCTS L L C, DBA PABCO GYPSUM** — Type QuietRock ES

4D. **Gypsum Board\*** — (As an alternate to Item 4, not for use with Items 1B and 2B) - Nom. 5/8 in. thick gypsum panels with beveled, square or tapered edges installed as described in Item 4.

**CGC INC** — Type ULX, ULIX.

**UNITED STATES GYPSUM CO** — Type ULX, ULIX

**USG MEXICO S A DE C V** — Type ULX

4E. **Wall and Partition Facings and Accessories\*** — (As an alternate to Item 4) — Nominal 5/8 in. thick, 4 ft wide panels, applied vertically and secured as described in Item 4.

**PABCO BUILDING PRODUCTS L L C, DBA PABCO GYPSUM** — Type QuietRock 527

4F. **Gypsum Board\*** — (As an alternate to 5/8 in. Type FSW in Item 4 - direct attached only) - Nom. 5/16 in. thick gypsum panels applied vertically. Two layers of 5/16 in. for every single layer of 5/8 in. gypsum board described in Item 4. Horizontal joints on the same side need not be staggered. Inner layer of each double 5/16 in. layer attached with fasteners, as described in item 4, spaced 24 in. OC. Outer layer of each double 5/16 in. layer attached per Item 4.

**NATIONAL GYPSUM CO** — Type FSW

5. **Barrier Mesh** — (Optional, Not Shown) - Attached to steel studs on one or both sides of the wall using Barrier Mesh Clips spaced at maximum 12 inches on center vertically, using a flat head type screw penetrating through the steel at least 3/8 of an inch. For Steel Studs less than 0.033 inches in thickness, use self-piercing screws. For Steel Studs equal to or greater than 0.033 inches in thickness, use steel drill screws (self-tapping). Gypsum Board (Item 4) to be installed directly over the Barrier Mesh using prescribed screw patterns with lengths increased by a minimum 1/8 in. Barrier Mesh may be installed with the long dimension of the diamond pattern positioned vertically or horizontally. Barrier Mesh joints may occur as butt joints at the framing members and secured using the Barrier Mesh Clips or occur in between framing members as overlapping joints secured using 18 SWG wire ties spaced a maximum 12 in. on center.

**CLARKDIETRICH BUILDING SYSTEMS** — Barrier Mesh, Barrier Mesh Clips

**\* Indicates such products shall bear the UL or cUL Certification Mark for jurisdictions employing the UL or cUL Certification (such as Canada), respectively.**

Last Updated on 2021-01-05

---

La presencia del nombre de una empresa o producto en esta base de datos no garantiza por sí misma que los productos así identificados hayan sido fabricados bajo el servicio de seguimiento de UL. Solo aquellos productos que lleven la marca UL deben considerarse como certificados y garantizados bajo el servicio de seguimiento de UL. Busque siempre la marca en el producto.

UL permite la reproducción del material contenido en el directorio de certificación en línea sujeta a las siguientes condiciones: 1. La información de la guía, las ensamblajes, las construcciones, los diseños, los sistemas y/o certificaciones (archivos) deben presentarse en su totalidad y de forma no engañosa, sin ninguna manipulación en los datos (o dibujos). 2. Debe aparecer la declaración "Reimpreso desde el directorio de certificaciones en línea con permiso de UL" junto al material extraído. Además, el material reimpreso debe incluir una nota de derechos de autor en el siguiente formato: "© 2021 UL LLC"

