

BXUV.V464 - Fire-resistance Ratings - ANSI/UL 263



Design/System/Construction/Assembly Usage Disclaimer

- Authorities Having Jurisdiction should be consulted in all cases as to the particular requirements covering the installation and use of UL Certified products, equipment, system, devices, and materials.
- Authorities Having Jurisdiction should be consulted before construction.
- Fire resistance assemblies and products are developed by the design submitter and have been investigated by UL for compliance with applicable requirements. The published information cannot always address every construction nuance encountered in the field.
- When field issues arise, it is recommended the first contact for assistance be the technical service staff provided by the product manufacturer noted for the design. Users of fire resistance assemblies are advised to consult the general Guide Information for each product category and each group of assemblies. The Guide Information includes specifics concerning alternate materials and alternate methods of construction.
- Only products which bear UL's Mark are considered Certified.

BXUV - Fire Resistance Ratings - ANSI/UL 263 Certified for United States

BXUV7 - Fire Resistance Ratings - CAN/ULC-S101 Certified for Canada

[See General Information for Fire-resistance Ratings - ANSI/UL 263 Certified for United States Design Criteria and Allowable Variances](#)

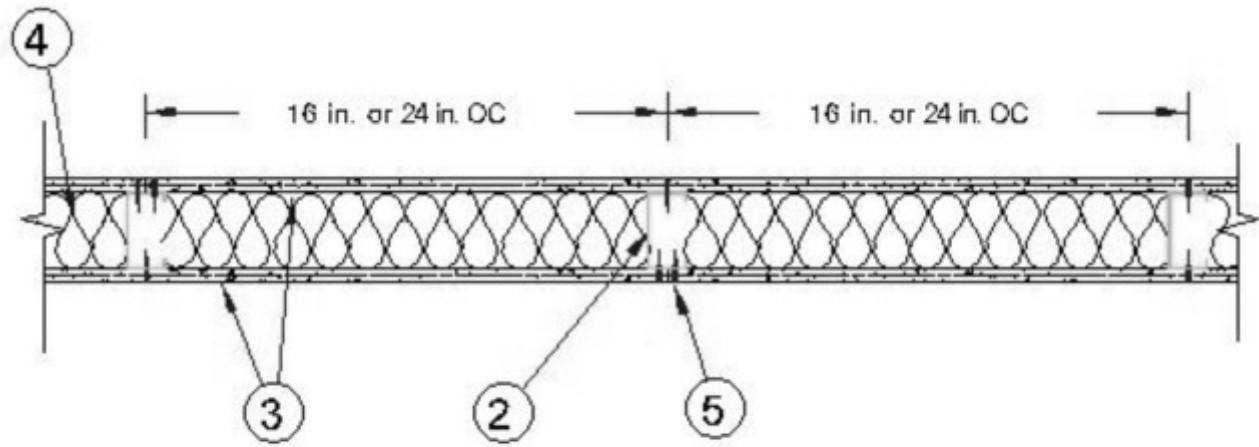
[See General Information for Fire Resistance Ratings - CAN/ULC-S101 Certified for Canada Design Criteria and Allowable Variances](#)

Design No. V464

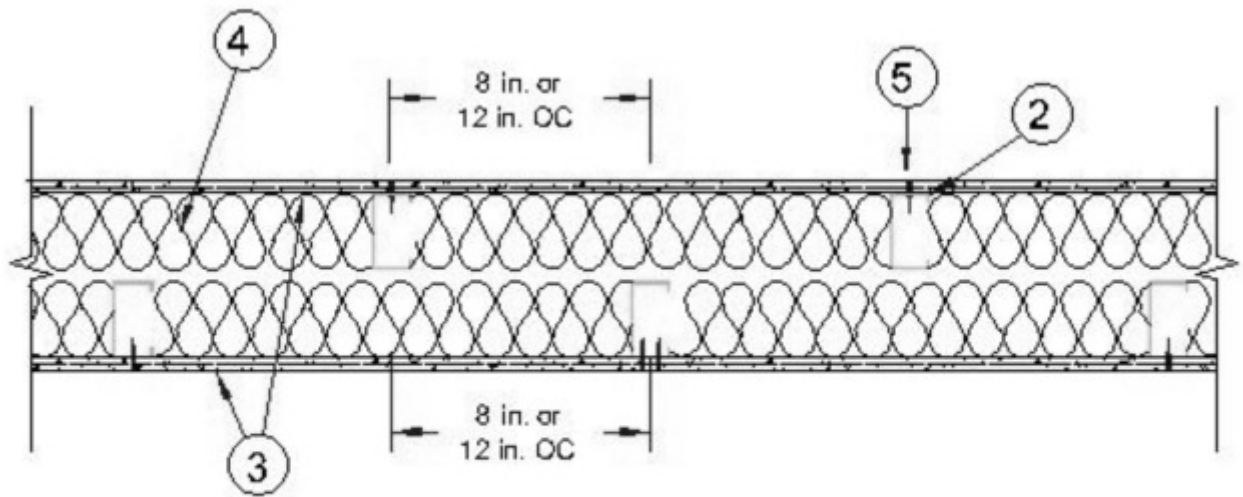
June 02, 2020

Nonbearing Wall Rating — 1 hr

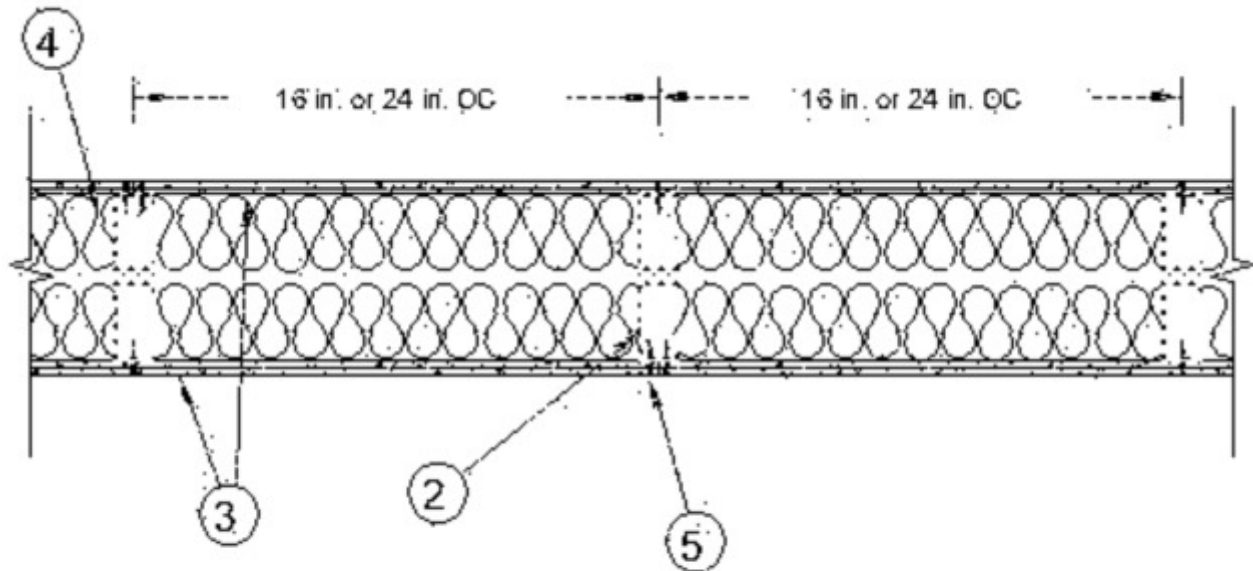
*** Indicates such products shall bear the UL or cUL Certification Mark for jurisdictions employing the UL or cUL Certification (such as Canada), respectively.**



Configuration A



Configuration B



Configuration C

1. Framing Members* - Floor and Ceiling Runners — Not shown — Proprietary channel shaped, min. 3-5/8 in. wide, fabricated from min. 0.015 in. (min bare metal thickness) galvanized steel, attached to the supporting structure with fasteners 24 in. OC max. Configurations B and C shall utilize two, separate tracks along the floor and ceiling. Effective thickness is 0.034 in.

CLARKDIETRICH BUILDING SYSTEMS — CD ProTRAK

DMFCWBS L L C — ProTRAK

MBA METAL FRAMING — ProTRAK

RAM SALES L L C — Ram ProTRAK

STEEL STRUCTURAL PRODUCTS L L C — Tri-S ProTRAK

1A. Framing Members* - Floor and Ceiling Runners — Not shown — Proprietary channel shaped, min. 3-5/8 in. wide, fabricated from min. 0.015 in. (min bare metal thickness) galvanized steel, attached to the supporting structure with fasteners 24 in. OC max. Configurations B and C shall utilize two, separate tracks along the floor and ceiling. Effective thickness is 0.034 in.

TELLING INDUSTRIES L L C — TRUE-TRACK™

1B. Framing Members* - Floor and Ceiling Runners — Not shown, for use with Item 2B — Proprietary channel shaped, min. 3-5/8 in. wide, fabricated from min. 0.018 in. (min bare metal thickness) galvanized steel, attached to the supporting structure with fasteners 24 in. OC max. Configurations B and C shall utilize two, separate tracks along the floor and ceiling.

RESCUE METAL FRAMING, L L C — AlphaTRAK

1C. Framing Members* - Floor and Ceiling Runners — Not shown, for use with Item 2C — Proprietary channel shaped, min. 3-5/8 in. deep, attached to the supporting structure with fasteners 24 in. OC max. Configurations B and C shall utilize

two, separate tracks along the floor and ceiling.

MARINO/WARE, DIV OF WARE INDUSTRIES INC — Viper25™Track

FUSION BUILDING PRODUCTS — Viper25™ Track

IMPERIAL MANUFACTURING GROUP INC — Viper25™ Track

2. Framing Members* - Steel Studs — Proprietary channel shaped studs, min. 3-5/8 in. wide, fabricated from min. 0.015 in. (min bare metal thickness) galvanized steel, spaced a max of 24 in. OC. Studs attached to the floor and ceiling runners with 7/16 in. long, No.6 steel screws on both sides of the stud. For locations that are not accessible for mechanical fastening, the flange of the stud shall be fastened to the track by tack welding. Effective thickness is 0.034 in.

CLARKDIETRICH BUILDING SYSTEMS — CD ProSTUD

DMFCWBS L L C — ProSTUD

MBA METAL FRAMING — ProSTUD

RAM SALES L L C — Ram ProSTUD

STEEL STRUCTURAL PRODUCTS L L C — Tri-S ProSTUD

2A. Framing Members* - Steel Studs — Proprietary channel shaped studs, min. 3-5/8 in. wide, fabricated from min. 0.015 in. (min bare metal thickness) galvanized steel, spaced a max of 24 in. OC. Studs attached to the floor and ceiling runners with 7/16 in. long, No.6 steel screws on both sides of the stud. For locations that are not accessible for mechanical fastening, the flange of the stud shall be fastened to the track by tack welding. Effective thickness is 0.034 in.

TELLING INDUSTRIES L L C — TRUE-STUD™

2B. Framing Members* - Steel Studs — For use with Item 1B. Proprietary channel shaped studs, min. 3-5/8 in. wide, fabricated from min. 0.018 in. (min bare metal thickness) galvanized steel, spaced a max of 24 in. OC. Studs attached to the floor and ceiling runners with 7/16 in. long, No.6 steel screws on both sides of the stud. For locations that are not accessible for mechanical fastening, the flange of the stud shall be fastened to the track by tack welding.

RESCUE METAL FRAMING, L L C — AlphaSTUD

2C. Framing Members* - Steel Studs — Proprietary channel shaped studs, min. 3-5/8 in. depth, spaced a max of 24 in. OC. Studs attached to the floor and ceiling runners with 7/16 in. long, No.6 steel screws on both sides of the stud. For locations that are not accessible for mechanical fastening, the flange of the stud shall be fastened to the track by tack welding.

MARINO/WARE, DIV OF WARE INDUSTRIES INC — Viper25™

FUSION BUILDING PRODUCTS — Viper25™

IMPERIAL MANUFACTURING GROUP INC — Viper25™

3. **Gypsum Board*** — Nominal 5/8 in. thick, 4 ft. wide panels, applied vertically to studs and runners with 1-1/4 in. long, No. 6, Type S screws spaced at 8 in. OC along the perimeter of the panels and 12 in. OC in the field. Vertical joints centered over studs and staggered one stud cavity on opposite sides of stud. Horizontal joints of vertically applied panels to be staggered 4 ft on opposite sides of the wall.

PABCO BUILDING PRODUCTS L L C, DBA PABCO GYPSUM — QuietRock 530, QuietRock ES

3A. **Gypsum Board*** — **Any 5/8 in. thick UL Classified Gypsum Board that is eligible for use in Design Nos. L501, G512 or U305.** (As an alternate to Item 3; on only one side of the assembly, for use only in Configuration A, when the studs are spaced 16 in. or 24 in. OC) — Nominal 5/8 in. thick, 4 ft. wide panels, applied vertically to studs and runners with 1-1/4 in. long, No. 6 Type S screws spaced at 8 in. OC along the perimeter of the panels and 12 in. OC in the field. Vertical joints centered over studs and staggered one stud cavity on opposite sides of stud. Horizontal joints of vertically applied panels to be staggered 4 ft on opposite sides of the wall. Horizontal joints of vertically applied panels need not be backed.

CABOT MANUFACTURING ULC ([View Classification](#)) — CKNX.R25370

AMERICAN GYPSUM CO ([View Classification](#)) — CKNX.R14196

BEIJING NEW BUILDING MATERIALS PUBLIC LTD CO ([View Classification](#)) — CKNX.R19374

CERTAINTED GYPSUM INC ([View Classification](#)) — CKNX.R3660

CGC INC ([View Classification](#)) — CKNX.R19751

GEORGIA-PACIFIC GYPSUM L L C ([View Classification](#)) — CKNX.R2717

CERTAINTED GYPSUM INC ([View Classification](#)) — CKNX.R18482

LOADMASTER SYSTEMS INC ([View Classification](#)) — CKNX.R11809

NATIONAL GYPSUM CO ([View Classification](#)) — CKNX.R3501

PABCO BUILDING PRODUCTS L L C, DBA PABCO GYPSUM ([View Classification](#)) — CKNX.R7094

PANEL REY S A ([View Classification](#)) — CKNX.R21796

SIAM GYPSUM INDUSTRY (SARABURI) CO LTD ([View Classification](#)) — CKNX.R19262

GEORGIA-PACIFIC GYPSUM L L C ([View Classification](#)) — CKNX.R6937

THAI GYPSUM PRODUCTS PCL ([View Classification](#)) — CKNX.R27517

UNITED STATES GYPSUM CO ([View Classification](#)) — CKNX.R1319

USG MEXICO S A DE C V ([View Classification](#)) — CKNX.R16089

4. **Batts and Blankets*** — UL Classified glass fiber insulation with or without kraft paper facing, nominal 3-1/2 in. thick, nominal density of 0.95 pcf, friction fit between studs to completely fill the stud cavities.

See **Batts and Blankets*** (BKNV and/or BZJZ) Categories for names of Classified companies.

5. **Joints and Screwheads** — Joint compound applied in two coats to joints and screw heads. Paper tape, nom 2 in. wide, embedded in first layer of compound over all joints.

6. **Furring Channels** — (Optional, Not Shown) — Resilient channels fabricated from min 25 MSG corrosion-protected steel, spaced vertically a max of 24 in. OC. Flange portion attached to each intersecting stud with 1/2 in. long Type S-12 steel screws.

*** Indicates such products shall bear the UL or cUL Certification Mark for jurisdictions employing the UL or cUL Certification (such as Canada), respectively.**

Last Updated on 2020-06-02

La presencia del nombre de una empresa o producto en esta base de datos no garantiza por sí misma que los productos así identificados hayan sido fabricados bajo el servicio de seguimiento de UL. Solo aquellos productos que lleven la marca UL deben considerarse como certificados y garantizados bajo el servicio de seguimiento de UL. Busque siempre la marca en el producto.

UL permite la reproducción del material contenido en el directorio de certificación en línea sujeta a las siguientes condiciones: 1. La información de la guía, las ensamblajes, las construcciones, los diseños, los sistemas y/o certificaciones (archivos) deben presentarse en su totalidad y de forma no engañosa, sin ninguna manipulación en los datos (o dibujos). 2. Debe aparecer la declaración "Reimpreso desde el directorio de certificaciones en línea con permiso de UL" junto al material extraído. Además, el material reimpreso debe incluir una nota de derechos de autor en el siguiente formato: "© 2021 UL LLC"