



BXUV.X531



Design/System/Construction/Assembly Usage Disclaimer

- Authorities Having Jurisdiction should be consulted in all cases as to the particular requirements covering the installation and use of UL Certified products, equipment, system, devices, and materials.
- Authorities Having Jurisdiction should be consulted before construction.
- Fire resistance assemblies and products are developed by the design submitter and have been investigated by UL for compliance with applicable requirements. The published information cannot always address every construction nuance encountered in the field.
- When field issues arise, it is recommended the first contact for assistance be the technical service staff provided by the product manufacturer noted for the design. Users of fire resistance assemblies are advised to consult the general Guide Information for each product category and each group of assemblies. The Guide Information includes specifics concerning alternate materials and alternate methods of construction.
- Only products which bear UL's Mark are considered Certified.

BXUV - Fire Resistance Ratings - ANSI/UL 263 Certified for United States

BXUV7 - Fire Resistance Ratings - CAN/ULC-S101 Certified for Canada

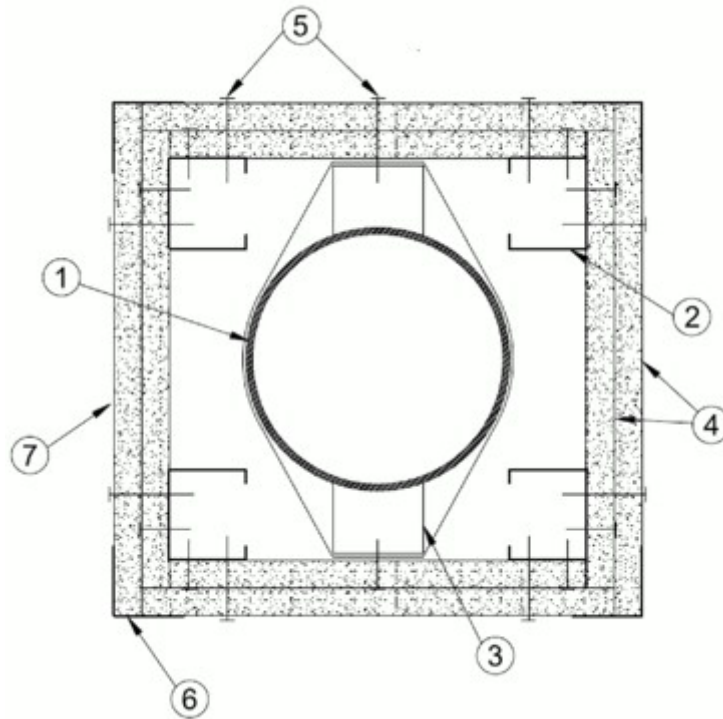
[See General Information for Fire-resistance Ratings - ANSI/UL 263 Certified for United States Design Criteria and Allowable Variances](#)

[See General Information for Fire Resistance Ratings - CAN/ULC-S101 Certified for Canada Design Criteria and Allowable Variances](#)

Design No. X531

Rating — 1-1/2 Hr.

*** Indicates such products shall bear the UL or cUL Certification Mark for jurisdictions employing the UL or cUL Certification (such as Canada), respectively.**



1. **Steel Column** — Steel pipe column with a min outside diam of 4-1/2 in., a min wall thickness of 0.109 in. and a min weight of 5.1 lb per ft.

2. **Wallboard Attachment Studs** — 1-5/8 in. deep with nom 1-3/8 in. legs, and 1/4 in. stiffening flanges fabricated from No. 26 MSG (min) galv steel. Channels cut 1/2 to 3/4 in. less in length than column height.

3. **Wallboard Attachment Channels** — 1-5/8 in. deep with nom 1-1/4 in. legs, fabricated from No. 26 MSG (min) galv steel. Channels tied to column with No. 18 SWG tie wire spaced approx 4 ft OC.

4. **Gypsum Board*** — 1/2 in. thick, two layers applied vertically. Inner layer attached to steel studs and channels with 1 in. long steel screws spaced 12 in. OC. Outer layer attached through inner layer into steel studs with 1-5/8 in. long screws spaced 12 in. OC.
AMERICAN GYPSUM CO — Type AG-C .

CABOT MANUFACTURING ULC — Type C.

CERTAINTED GYPSUM INC — Type C

CGC INC — Types C, IP-X2.

CERTAINTED GYPSUM INC — Type LGFC-C/A.

GEORGIA-PACIFIC GYPSUM L L C — Types 5, DAPC, TG-C.

NATIONAL GYPSUM CO — -eXP-C, FSK-C, FSW-C.

PABCO BUILDING PRODUCTS L L C, DBA PABCO GYPSUM — Type PG-C.

PANEL REY S A — Type PRC

THAI GYPSUM PRODUCTS PCL — Type C.

UNITED STATES GYPSUM CO — Types C, IP-X2.

USG BORAL DRYWALL SFZ LLC — Type C

USG MEXICO S A DE C V — Types C, IP-X2.

4A. **Gypsum Board*** — (Not Shown) - As an alternate to Item 4. 5/8 in. thick installed as described in Item 4.

CGC INC — Type ULIX

UNITED STATES GYPSUM CO — Type ULIX

4B. **Gypsum Board*** — (As an alternate to Item 4, For use with Item 6A) — 1/2 in. thick, installed as described in Item 4.

CERTAINTED GYPSUM INC — Type C

5. **Screws** — Self-drilling and self-tapping bugle head Type S wallboard screws, 1 and 1-5/8 in. long.

6. **Corner Bead** — No. 28 MSG galv steel, two 1-1/4 in. legs, attached to wallboard with Type 4d gypsum wallboard nails spaced vertically 12 in. O.C.

6A. **Corner Bead*** — (As an alternate to Item 6, For use with Item 4B) — 0.058 in. thick at shoulder thickness, 1-7/8 in. legs, attached to gypsum board using all-purpose ready mix joint compound.

CERTAINTED CORP — Type NC

7. **Finishing System** — Joint compound, 1/16 in. thick, applied over corner beads, joints and surfaces of wallboard.

*** Indicates such products shall bear the UL or cUL Certification Mark for jurisdictions employing the UL or cUL Certification (such as Canada), respectively.**

La presencia del nombre de una empresa o producto en esta base de datos no garantiza por sí misma que los productos así identificados hayan sido fabricados bajo el servicio de seguimiento de UL. Solo aquellos productos que lleven la marca UL deben considerarse como certificados y garantizados bajo el servicio de seguimiento de UL. Busque siempre la marca en el producto.

UL permite la reproducción del material contenido en el directorio de certificación en línea sujeta a las siguientes condiciones: 1. La información de la guía, las ensamblajes, las construcciones, los diseños, los sistemas y/o certificaciones (archivos) deben presentarse en su totalidad y de forma no engañosa, sin ninguna manipulación en los datos (o dibujos). 2. Debe aparecer la declaración "Reimpreso desde el directorio de certificaciones en línea con permiso de UL" junto al material extraído. Además, el material reimpreso debe incluir una nota de derechos de autor en el siguiente formato: "© 2021 UL LLC"